



REPUBLIC OF LIBERIA
MINISTRY OF TRANSPORT
DIVISION OF METEOROLOGY
LIBERIA METEOROLOGICAL SERVICE (LMS)
Contact us: +231886565078/+231776679045



Email: meteoliberia.transport@yahoo.com/website: <https://meteoliberia.com>

VOLUME N° 09: SECOND DEKAD OF APRIL 2026



Summaries

- ◆ RAINFALL ANALYSIS
- ◆ TEMPERATURE ANALYSIS
- ◆ POTENTIAL EVAPOTRANSPIRATION
- ◆ LIVELIHOOD COMFORTABILITY INDEX
- ◆ VEGETATIVE CONDITION
- ◆ MONTHLY CLIMATE OUTLOOK
- ◆ FARMER ADVISORY

AGROMETEOROLOGICAL CONDITION

Rainfall during the second Dekad of APRIL 2026: The second dekad of APRIL 2026 was characterized by low to moderate rainfall amounts across the country. Nationwide, rainfall amounts ranged from **8.36mm to 68.4mm**, with the southeast region (Sinoe, Rivergee, Grand Kru and Maryland) experiencing the highest amount of rainfall during this period. The lowest rainfall was experienced in the southwest part of the country affecting Grand Cape Mount, Bomi, and Montserrado counties.

Normal rainfall (1990-2020): As compare to the rainfall normal, the country experienced normal to above normal rainfall situation. The southeast region including part of Nimba county experienced above normal rainfall condition while the rest of the country experienced normal rainfall condition (figure 2).

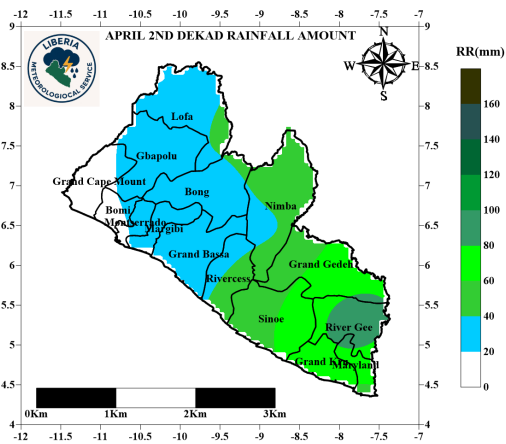


Figure 1: Rainfall Amount

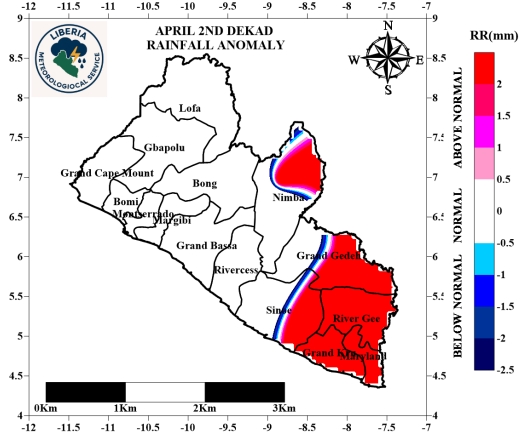


Figure 2: Rainfall Normal (1990-2020)

Number of rainy days during the second Dekad of April 2026: During the second Dekad of April 2026, most parts of the country received rainfall between one to seven days. However, Grand Kru, Maryland, River Gee, Grand Kru and Grand Gedeh counties recorded the highest number of rainy days while counties in the southwest received less rainy days (figure 3).

Soil Moisture Index (SMI) during the second Dekad of APRIL 2026: The second DEKAD of APRIL 2026 shows that southeast region experienced above normal moisture content in the soil while the eastern part of the country experienced below normal moisture content in the soil. The North, central, and southern regions experienced below normal moisture content in the soil (figure 4).

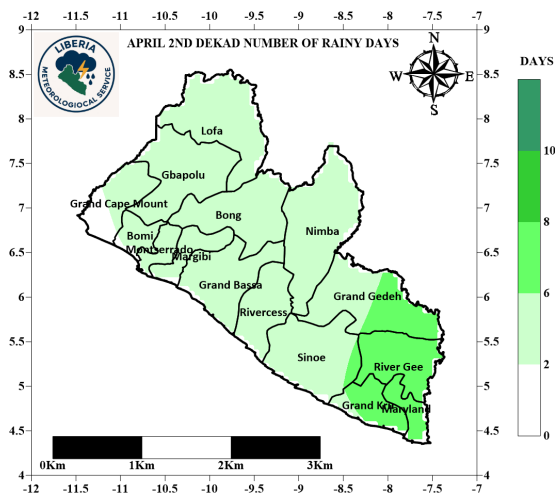


Figure 3: Number of rainy days

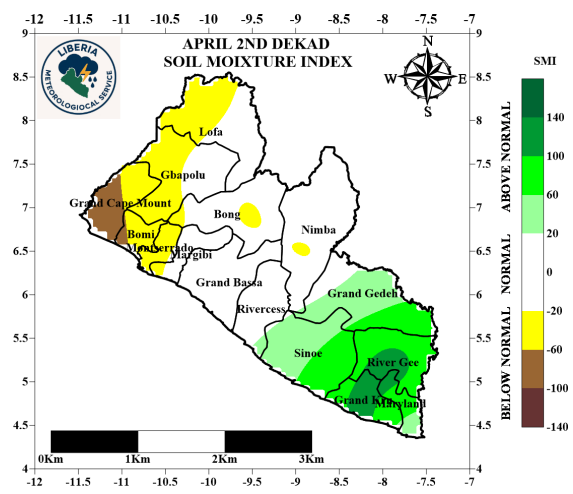


Figure 4: Soil Moisture Index

EVOLUTION OF TEMPERATURES

Maximum Temperature: The second Dekad of April 2026 was marked by an increase in maximum temperature in most parts of the country with the western part of country experiencing the lowest while the rest of the counties experienced highest temperature. During this period, maximum temperature ranged between 28.8°C and 31.4°C (Figure 6).

Compared to the long-term mean (1990–2020), the western region was cooler than normal while the south-east part of country experienced warmer condition than normal. Nevertheless, the central region of the country experienced normal condition during this period (Figure 7).

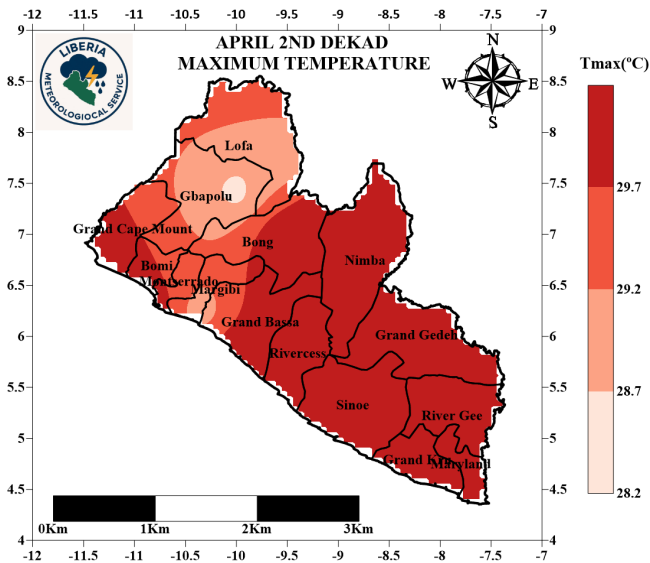


Figure 5: Maximum temperatures at 2m

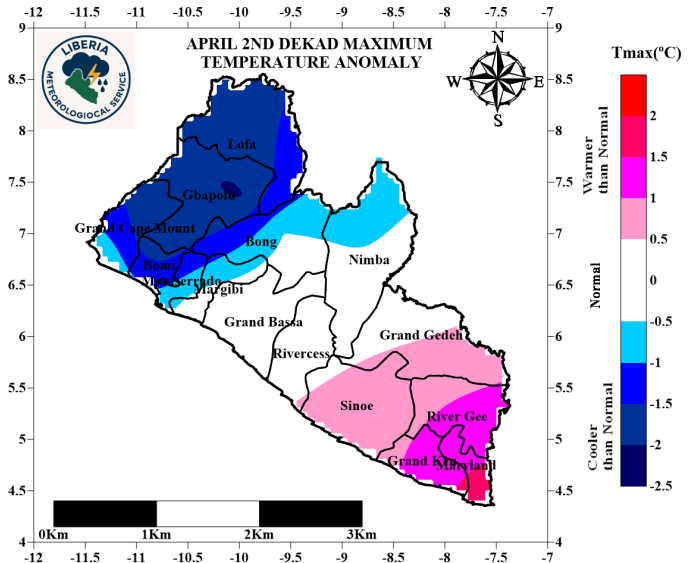


Figure 6: Maximum Temperature Anomaly (1991-2020)

Minimum Temperature: The second Dekad of April 2026 was marked by variation in minimum temperature. The southern (costal) region experienced high minimum temperature, while the north of Lofa and Nimba experienced the lowest. Minimum temperature during this period ranged from 22.7°C to 26.2°C (figure 7).

Compared to the long-term mean (1990–2020), the northern parts of the country experienced warmer condition than normal while the other parts of the country experienced normal minimum temperature condition (figure 8).

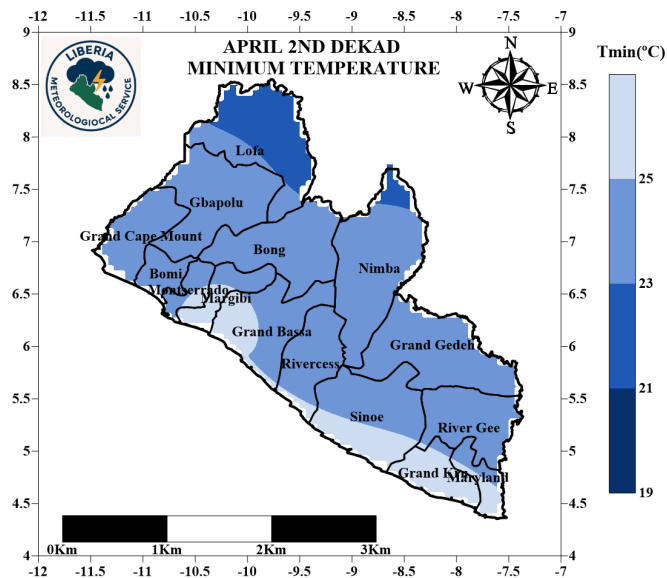


Figure 7: Minimum temperatures at 2m

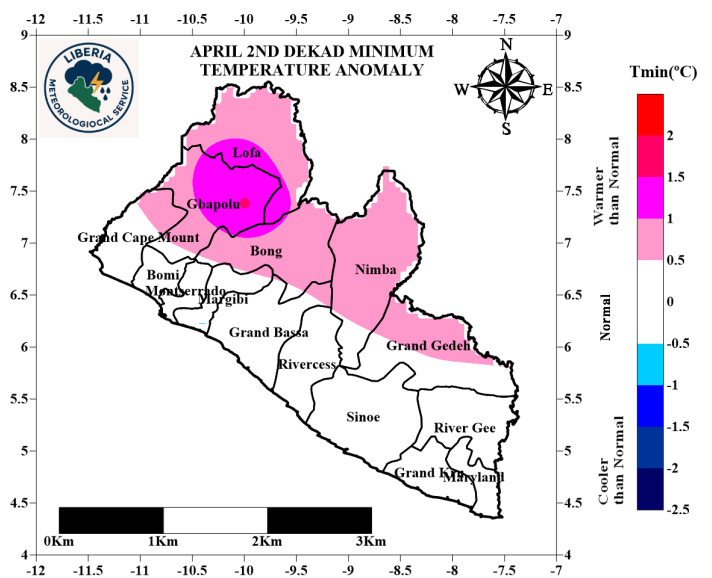
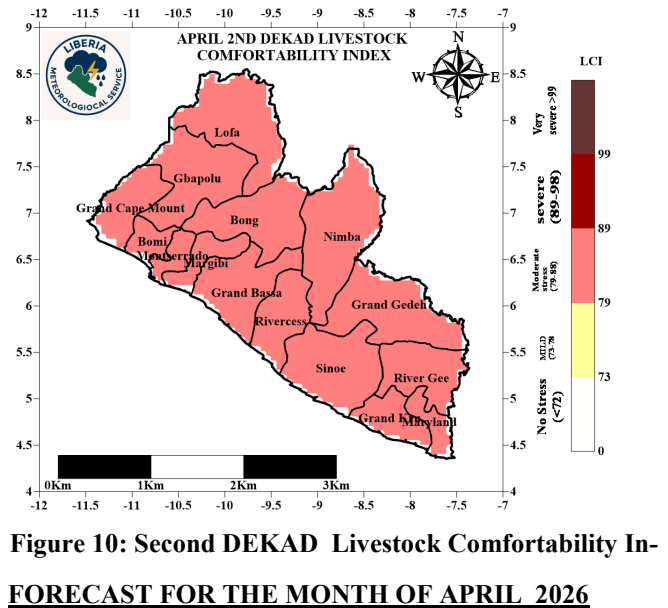
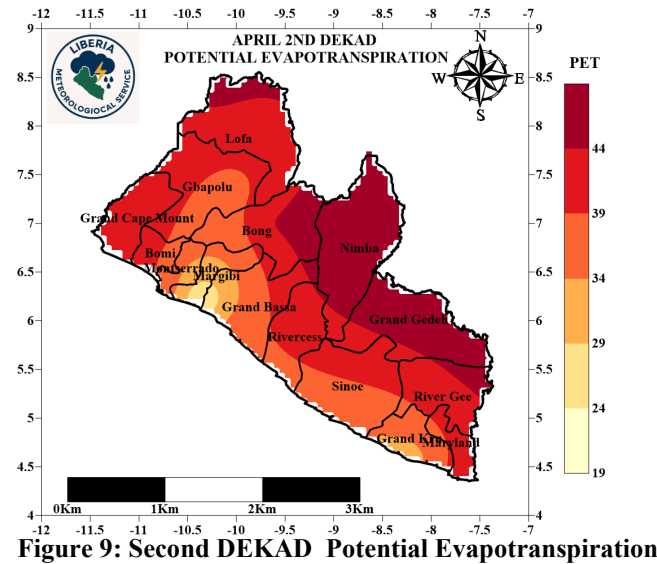


Figure 8: Minimum Temperature Anomaly (1991-2020)

POTENTIAL EVAPOTRANSPIRATION

During the second Dekad of April 2026, most parts of the Country experienced intense sunshine with high evapotranspiration rates. However, some counties in the coastal counties experienced lowest evapotranspiration rate while counties in the north and western regions experienced high evapotranspiration rate (Figure 9).

Livestock Comfortability Index (LCI): During the second Dekad of April 2026, livestock experienced moderate thermal stress due to rising daytime temperature, moderate humidity, and reduced wind speed. Animals show moderate discomfort and reduced feeding during peak afternoon hour, but no major health risk are anticipated with proper shade and hydration (Figure 10).



Normalized difference Vegetation Index (NDVI): During the second Dekad of April, vegetation is gradually becoming dense. The north and northeast regions experienced moderate increase in vegetation while the south and western regions experienced moderately dense vegetation (Figure 10).

RAINFALL: In APRIL 2026, the forecasted cumulative rainfall amount across the counties is anticipated to be between 133.0mm and 231.3mm. Sinoe, River Gee, Grand Kru, Maryland and parts of Nimba, Rivercess, Grand Bassa, Nimba, Lofa and Gbapolu are expected to record the highest rainfall amount. The western region including Grand Cape Mount, Bomi, Montserado, Margibi and parts of Grand Bassa and Gbarpolu are expected to receive less rainfall during this period. The rest of the country are expected to experience moderate rainfall during this period (figure 11).

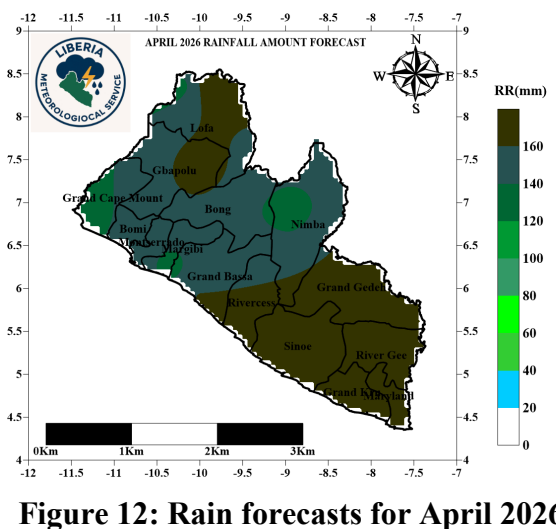
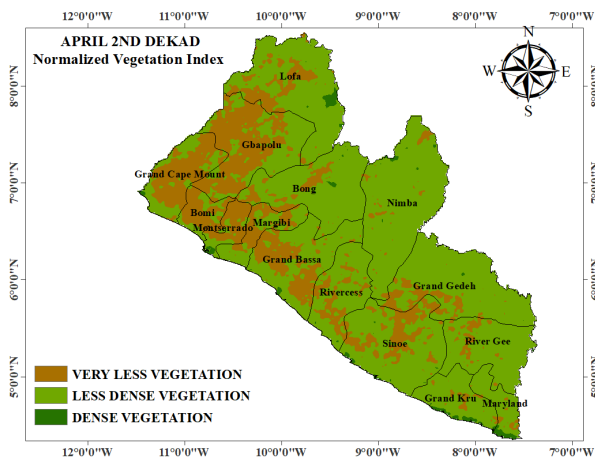
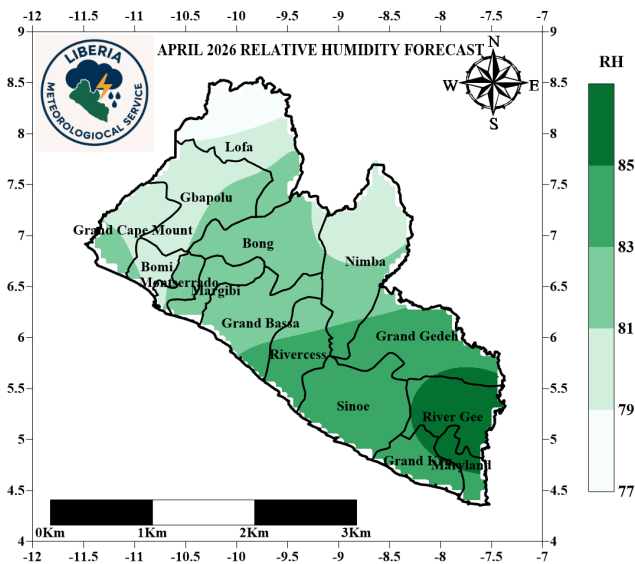


Figure 11: Second DEKAD NDVI

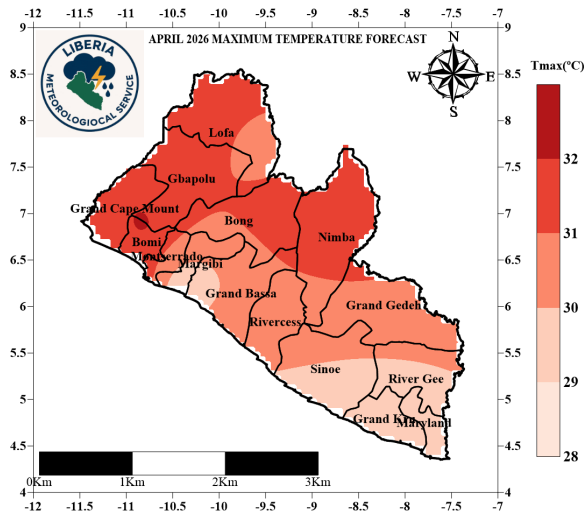
Figure 12: Rain forecasts for April 2026

FORECAST FOR THE MONTH OF APRIL 2026



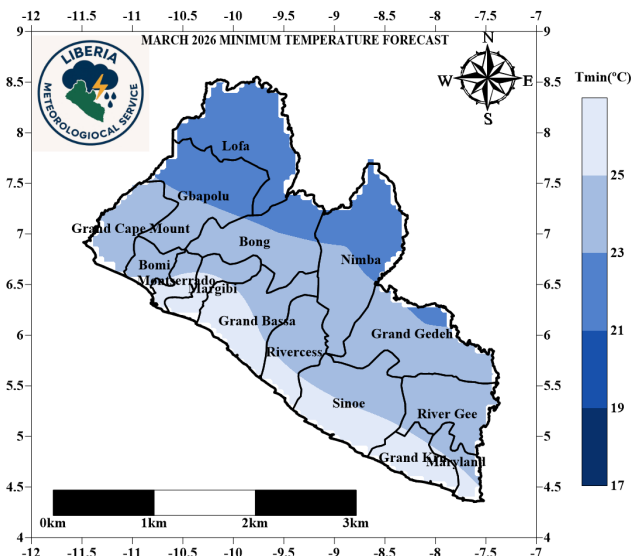
Relative Humidity (RH): During the month of April high relative humidity is expected to in the southeast region. However, the highest relative humidity is expected in parts of Maryland and Rivergee. Relative humidity within the month of April 2026 is predicted to range from 77.2% to 86.2%. The lowest relative humidity is expected to occur in the western region affecting Lofa, Gbapolu, Grand Cape Mount and Bomi counties (figure 13).

Figure 13: RH forecasts for April 2026



Maximum Temperature: The maximum temperature in APRIL 2026 is anticipated to be between 28.8°C to 32.1°C across the Country. The lowest maximum daytime temperature is predicted over Maryland, Grand Kru, Sinoe, Margibi and Grand Bassa counties while the highest maximum temperature is expected in the north, west and central regions of the country. However, the extreme maximum temperature is expected to occur in Bomi county (figure 14).

Figure 14: Tmax forecasts for April 2026



Minimum Temperature: Minimum temperature across the country in April 2026 is anticipated to range between 22.2°C and 26.9°C. The highest minimum temperature is anticipated to occur along the coastal region including counties such as Maryland, Grand Kru, Sinoe, Rivercess, Grand Bassa, Margibi and Montserrado while the lowest minimum temperature is expected in Lofa and parts of Nimba, Bong and Gbapolu counties (Figure 15).

Figure 15: Tmin forecasts for April 2026

Farmers Advisories

- As rainfall has gradually commenced, vegetation is becoming denser, and rainfall is predicted to moderately increase in the coming dekad of April. Additionally, soil moisture is expected to improve. Farmers are therefore strongly encouraged to take the following precautions in their agricultural practices:
- **Field Preparation:**

Move to low-lying areas for vegetable and rice production; this will help reduce the risk of wilting and maximize yields for farmers across the country.

Create drainage channels where possible to prevent waterlogging in case of heavy rainfall.

Farmers are advised to properly lay out their fields for rice production during the coming season.

Farmers are also advised to begin preparing upland areas for rice and other crops ahead of the upcoming cropping season.
- **Crop Management:**

Plant drought- or water-tolerant crop varieties to reduce the risk of losses.

Monitor crops regularly for signs of disease or stress caused by high evapotranspiration.

Irrigate when high evaporation and evapotranspiration are observed.
- **Livestock Management:**

Move animals to low lying areas to avoid heat stress.

Ensure animals are properly housed and maintain good hygiene to prevent disease outbreaks.

Provide clean drinking water regularly to prevent dehydration and heat stress.

Check livestock frequently for symptoms of illness and provide timely treatment when needed.
- **General Precautions:**

Stay informed about weather updates through the Liberia Meteorological Service website (<https://meteoliberia.com>).

Work closely with local agricultural extension officers for region-specific advice on crop and livestock management.

By taking these proactive measures, farmers can protect their crops and livestock, reduce losses, and maintain productive agricultural practices during periods of increased rainfall.

Average values of meteorological parameters for the second DEKAD of APRIL 2026

Stations	Temperature at two (2) meters			Precipitation	Humidity
	Ave. Tx	Ave. Tn	Ave. Temp	Rainfall Sum	Ave. Hum.
AGBAS81	30.1	25.0	27.6	32.9	86.5
AGBEL87	28.6	24.0	26.3	38.5	90.8
AGCAR83	30.3	23.6	26.9	34.3	87.9
AGFOY86	29.5	22.7	26.1	19.5	86.7
AGFTI80	29.6	23.9	26.8	19.5	90.3
AGFTW82	30.8	24.2	27.5	91	86.0
AGGCM89	30.3	24.5	27.4	8.3	88.5
AGSAR85	30.9	23.6	27.2	45	86.9
AGVON84	29.5	22.7	26.1	34.1	86.7
AGZOR88	28.8	22.3	25.6	42.7	88.0
RF-06-KAB	30.3	25.3	27.8	68.4	83.1
SYGCA64	30.1	26.0	28.0	64.9	81.9
SYHAR63	31.4	25.4	28.4	54.1	81.3
SYROB60	28.8	26.2	27.5	24.6	85.4
SYSPA65	30.0	24.7	27.3	18	88.1
SYTPT62	30.9	23.6	27.2	36.7	86.9
SYZWD61	30.8	23.4	27.1	63.9	85.0

LIBERIA METEOROLOGICAL SERVICE

Ministry of Transport

Corner of Carey and Warren Streets
Monrovia, Liberia

Phone: +231777285950/+231776679045

Email: meteoliberia.transport@yahoo.com

**Motto: Weather is everybody
business**

The Liberia Meteorological Service (LMS) is responsible for providing meteorological services to support the social and economic progress of Liberia, ensure the safety and well-being of its population, and fulfil its international obligations.

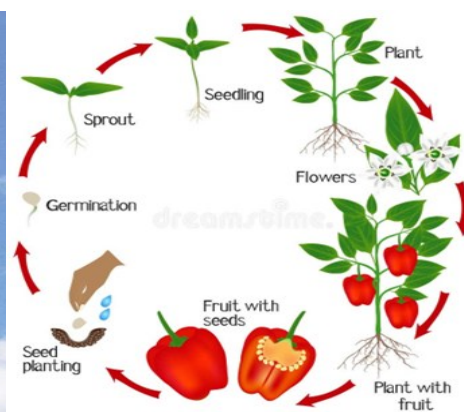
It was created by an Act of Legislation in April 1972 and was placed under the Ministry of Transport. Prior to that, it was under the Ministry of Commerce, Industry and Transportation.



Hot pepper



MET. Observation



Phenology of pepper