



REPUBLIC OF LIBERIA  
MINISTRY OF TRANSPORT  
DIVISION OF METEOROLOGY  
LIBERIA METEOROLOGICAL SERVICE (LMS)  
Contact us: +231886565078/+231776679045



Email: [meteoliberia.transport@yahoo.com](mailto:meteoliberia.transport@yahoo.com)/website: <https://meteoliberia.com>

## VOLUME N° 09: FIRST DEKAD OF APRIL 2026



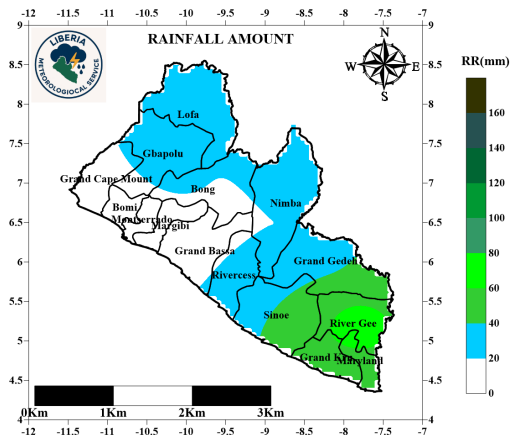
### *Summaries*

- ◆ RAINFALL ANALYSIS
- ◆ TEMPERATURE ANALYSIS
- ◆ POTENTIAL EVAPOTRANSPIRATION
- ◆ LIVELIHOOD COMFORTABILITY INDEX
- ◆ VEGETATIVE CONDITION
- ◆ MONTHLY CLIMATE OUTLOOK
- ◆ FARMER ADVISORY

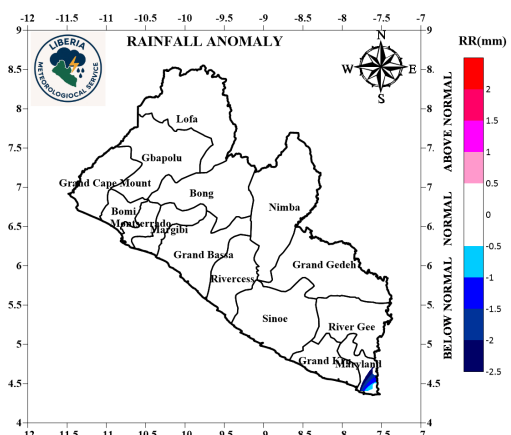
## AGROMETEOROLOGICAL CONDITION

**Rainfall during the first Dekad of APRIL 2026:** The first dekad of APRIL 2026 was characterized by low to moderate rainfall amounts across the country. Nationwide, rainfall amounts ranged from **9.8mm to 68.1mm**, with the southeast region (Sinoe, Rivergee, Grand Kru and Maryland) experiencing the highest amount of rainfall during this period. The lowest rainfall was experienced in the southwest part of the country affecting Grand Cape Mount, Bomi, Montserrado Margibi and parts of Grand Bassa, Bong and Gbapolu counties (figure 1).

**Normal rainfall (1990-2020):** As compare to the rainfall normal, the country experienced normal to above normal rainfall situation. The southeast part of Maryland experienced below normal rainfall condition while the rest of the country experienced normal rainfall condition (figure 2).



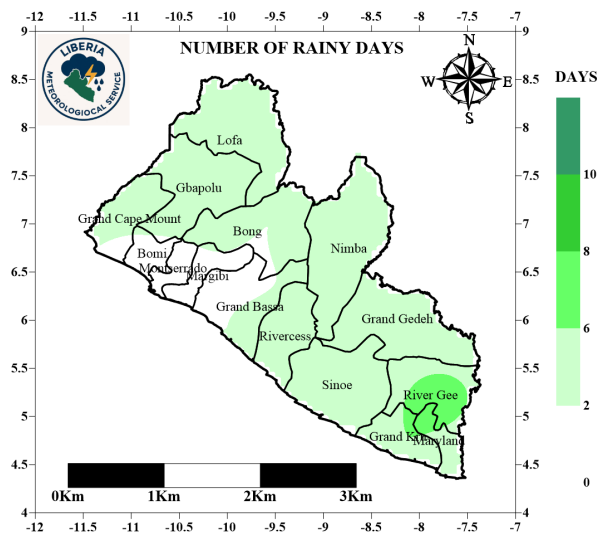
**Figure 1: Rainfall Amount**



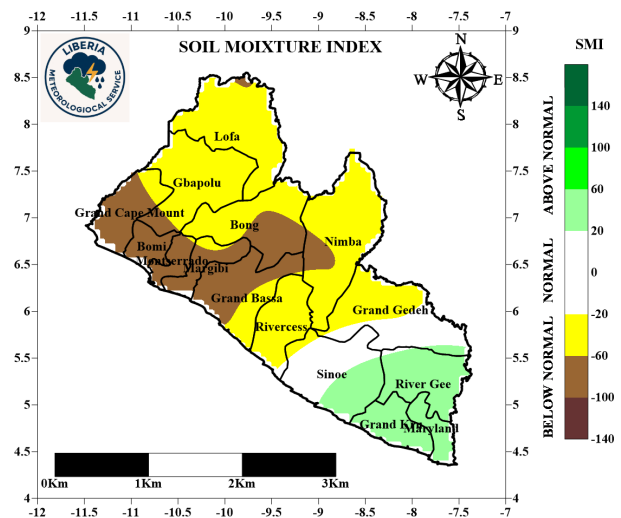
**Figure 2: Rainfall Normal (1990-2020)**

**Number of rainy days during the first Dekad of April 2026:** During the first Dekad of April 2026, most parts of the country received rainfall between one to seven days. However, River Gee and Grand Kru counties recorded the highest number of rainy days while counties in the southwest received rainy days between 0 to 1 (figure 3).

**Soil Moisture Index (SMI) during the first Dekad of APRIL 2026:** The first DEKAD of APRIL 2026 shows that River Gee, Maryland, Grand Kru and Sinoe counties experienced above normal moisture content in the soil while parts of Sinoe and Grand Gedeh counties experienced normal moisture content in the soil. The North, central, South and the wester regions experienced below normal moisture content in the soil (figure 4).



**Figure 3: Number of rainy days**



**Figure 4: Soil Moisture Index**

## EVOLUTION OF TEMPERATURES

**Maximum Temperature:** The first Dekad of April 2026 was marked by an increase in maximum temperature in most parts of the country with parts of Lofa, Gbapolu, Montserrado, Sinoe, Grand Kru and Margibi counties experiencing the lowest while the rest of the counties experienced highest temperature. During this period, maximum temperature ranged between  $28.3^{\circ}\text{C}$  and  $31.5^{\circ}\text{C}$  (Figure 6).

Compared to the long-term mean (1990–2020), the western region was cooler than normal while the parts of Rivergeee and Maryland counties experienced was warmer than normal condition. Nevertheless, the rest of the counties experienced normal condition (Figure 7).

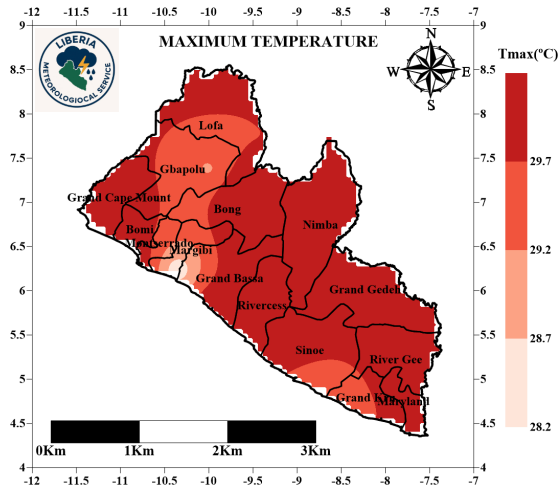


Figure 5: Maximum temperatures at 2m

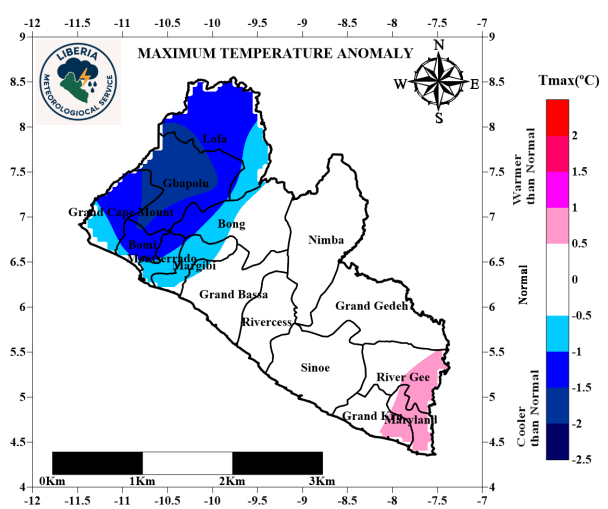


Figure 6: Maximum Temperature Anomaly (1991-2020)

**Minimum Temperature:** The first Dekad of April 2026 was marked by variation in minimum temperature. The southern (costal) region experienced high minimum temperature, while the north and northwestern region experienced the lowest. Minimum temperature during this period ranged from  $21.5^{\circ}\text{C}$  to  $25.4^{\circ}\text{C}$  (figure 7).

Compared to the long-term mean (1990–2020), parts of Lofa and Gbapolu counties experienced warmer condition than normal while parts of coastal counties experienced cooler condition than normal. Nevertheless, the rest of the counties experienced normal condition (figure 8).

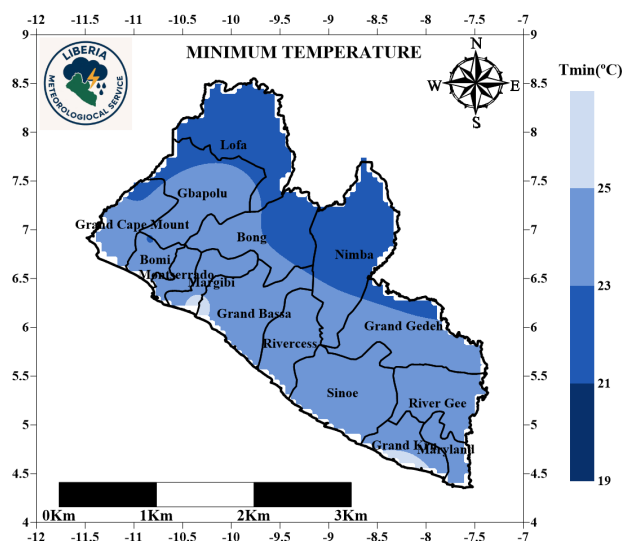


Figure 7: Minimum temperatures at 2m

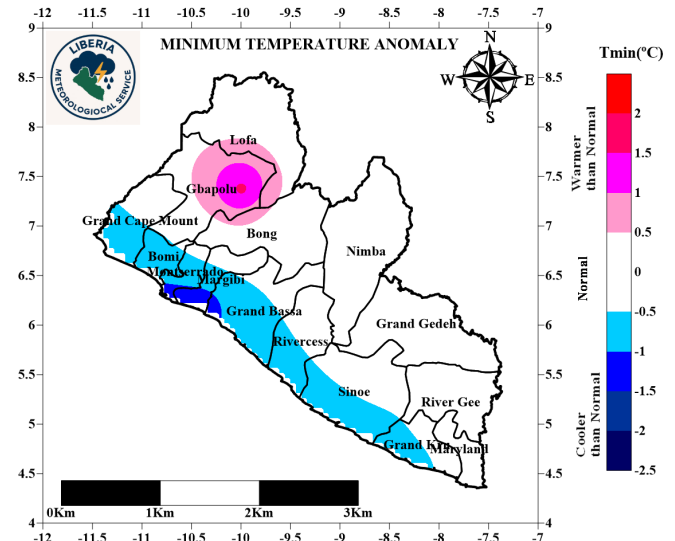


Figure 8: Minimum Temperature Anomaly (1991-2020)

## POTENTIAL EVAPOTRANSPIRATION

During the first Dekad of April 2026, most parts of the Country experienced intense sunshine with high evapotranspiration rates. However, some counties in the coastal counties experienced the lowest evapotranspiration rate. Nevertheless, other parts of the country experienced high evapotranspiration rate (Figure 9).

**Livestock Comfortability Index (LCI):** During the first Dekad of April 2026, livestock experienced moderate thermal stress due to rising daytime temperature, moderate humidity, and reduced wind speed. Animals show moderate discomfort and reduced feeding during peak afternoon hour, but no major health risk are anticipated with proper shade and hydration (Figure 10).

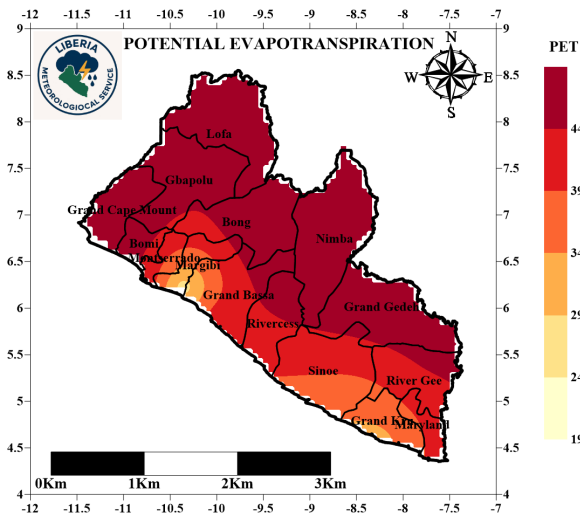


Figure 9: First DEKAD Potential Evapotranspiration

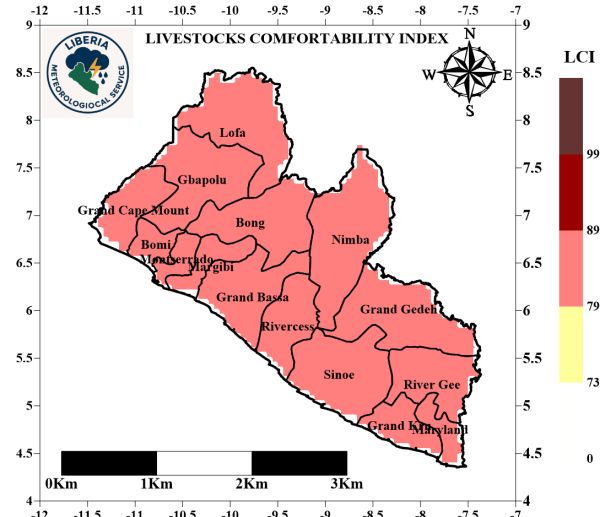


Figure 10: First DEKAD Livestock Comfortability Index

**Normalized difference Vegetation Index (NDVI):** During the first Dekad of April, vegetation is gradually becoming dense. The southeast region experienced high increase in vegetation affecting, Gbapolu and Grand Bassa counties while the north and western regions remain moderately dense. The southern region of Margibi, Montserrado and experienced decrease in vegetation (Figure 10).

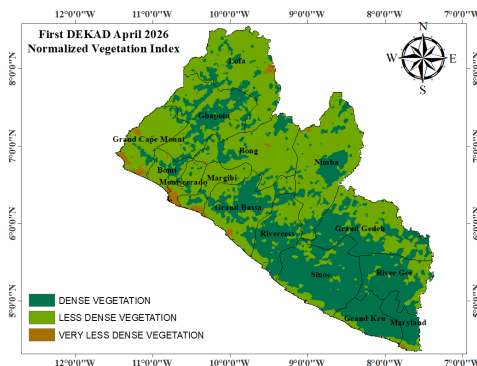


Figure 11: First DEKAD NDVI

## FORECAST FOR THE MONTH OF APRIL 2026

**RAINFALL:** In APRIL 2026, the forecasted cumulative rainfall amount across the counties is anticipated to be between 133.0mm and 231.3mm. Sinoe, River Gee, Grand Kru, Maryland and parts of Nimba, Rivercess, Grand Bassa, Nimba, Lofa and Gbapolu are expected to record the highest rainfall amount. The western region including Grand Cape Mount, Bomi, Montserrado, Margibi and parts of Grand Bassa and Gbarpolu are expected to receive less rainfall during this period. The rest of the country are expected to experience moderate rainfall during this period (figure 11).

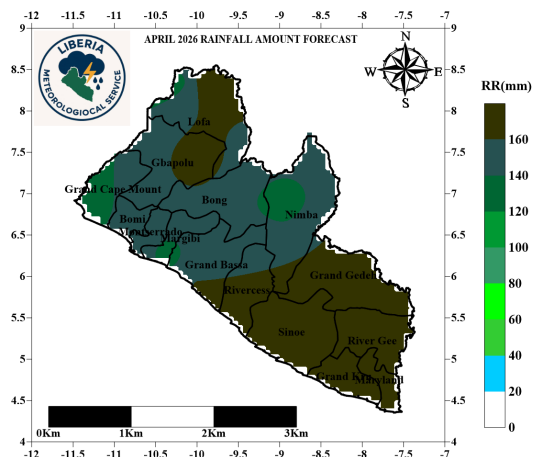
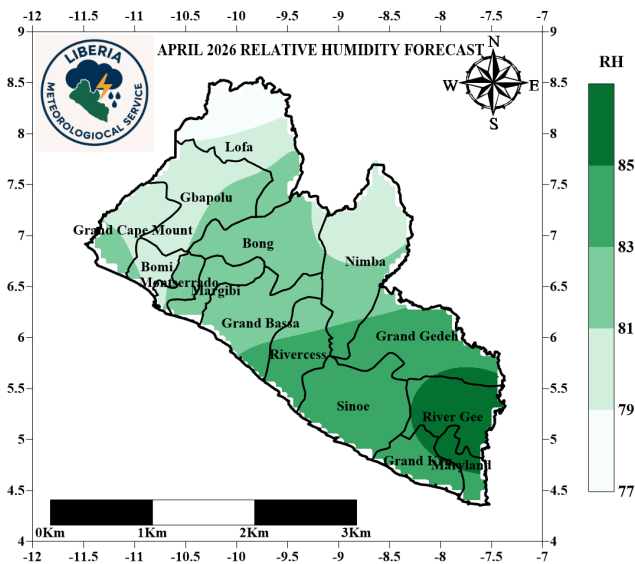


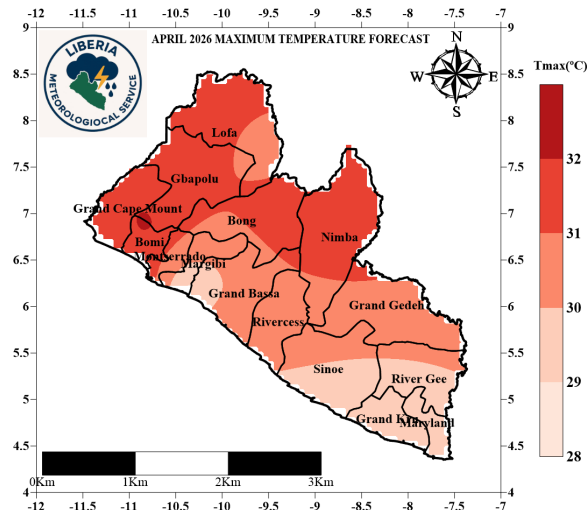
Figure 12: Rain forecasts for April 2026

**FORECAST FOR THE MONTH OF APRIL 2026**



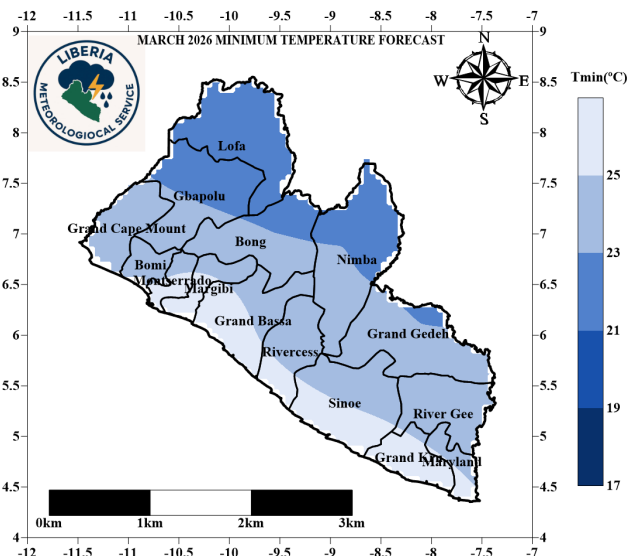
**Relative Humidity (RH):** During the month of April high relative humidity is expected to in the southeast region. However, the highest relative humidity is expected in parts of Maryland and Rivergee. Relative humidity within the month of April 2026 is predicted to range from 77.2% to 86.2%. The lowest relative humidity is expected to occur in the western region affecting Lofa, Gbapolu, Grand Cape Mount and Bomi counties (figure 13).

**Figure 13: RH forecasts for April 2026**



**Maximum Temperature:** The maximum temperature in APRIL 2026 is anticipated to be between 28.8°C to 32.1°C across the Country. The lowest maximum daytime temperature is predicted over Maryland, Grand Kru, Sinoe, Margibi and Grand Bassa counties while the highest maximum temperature is expected in the north, west and central regions of the country. However, the extreme maximum temperature is expected to occur in Bomi county (figure 14).

**Figure 14: Tmax forecasts for April 2026**



**Minimum Temperature:** Minimum temperature across the country in April 2026 is anticipated to range between 22.2°C and 26.9°C. The highest minimum temperature is anticipated to occur along the coastal region including counties such as Maryland, Grand Kru, Sinoe, Rivercess, Grand Bassa, Margibi and Montserrado while the lowest minimum temperature is expected in Lofa and parts of Nimba, Bong and Gbapolu counties (Figure 15).

**Figure 15: Tmin forecasts for April 2026**

## Farmers Advisories

---

As rainfall has gradually commenced and vegetation is becoming dense and rainfall is predicted to moderately increase in the coming dekad of April, and soil moistures are expected to improve, farmers are strongly encouraged to take the following precautions in their agricultural practices:

- **Field Preparation:**

Move to low-lying areas for vegetable and rice production; this will help reduce the risk of wilting and maximize yields for farmers across the country.

Create drainage channels where possible to prevent waterlogging in case of heavy rainfall.

Farmers are advised to properly lay out their fields for rice production during the coming season.

Farmers are also advised to begin preparing upland areas for rice and other crops ahead of the upcoming cropping season.

- **Crop Management:**

Plant drought- or water-tolerant crop varieties to reduce the risk of losses.

Monitor crops regularly for signs of disease or stress caused by high evapotranspiration.

Irrigate when high evaporation and evapotranspiration are observed.

- **Livestock Management:**

Move animals to low lying areas to avoid heat stress.

Ensure animals are properly housed and maintain good hygiene to prevent disease outbreaks.

Provide clean drinking water regularly to prevent dehydration and heat stress.

Check livestock frequently for symptoms of illness and provide timely treatment when needed.

- **General Precautions:**

Stay informed about weather updates through the Liberia Meteorological Service website (<https://meteoliberia.com>).

Work closely with local agricultural extension officers for region-specific advice on crop and livestock management.

**By taking these proactive measures, farmers can protect their crops and livestock, reduce losses, and maintain productive agricultural practices during periods of increased rainfall.**

## Average values of meteorological parameters for the first DEKAD of APRIL 2026

Stations	Temperature at two (2) meters			Precipitation	Humidity
	Ave. Tx	Ave. Tn	Ave. Temp	Rainfall Sum	Ave. Hum.
AGBAS81	30.1	24.3	27.2	15.7	86.6
AGBEL87	29.1	24.0	26.6	36.1	87.4
AGCAR83	30.8	22.6	26.7	17.4	85.3
AGFOY86	30.1	21.5	25.8	23	83.3
AGFTI80	30.1	23.0	26.5	14.4	87.4
AGFTW82	30.3	23.8	27.0	68.1	87.9
AGGCM89	30.4	23.8	27.1	10.6	87.1
AGSAR85	31.5	22.4	26.9	25.5	83.5
AGVON84	30.1	21.5	25.8	20	83.3
AGZOR88	29.7	21.6	25.6	39.2	85.3
RF-06-KAB	29.4	24.6	27.0	56	86.7
SYGCA64	29.5	25.3	27.4	46.3	84.9
SYHAR63	30.5	24.9	27.7	48.1	84.6
SYROB60	28.3	25.4	26.8	9.8	88.1
SYSPA65	30.1	24.0	27.0	10.7	87.2
SYTPT62	31.0	22.8	26.9	20	84.9
SYZWD61	30.6	23.1	26.8	32.8	83.8

**LIBERIA METEOROLOGICAL SERVICE**

### **Ministry of Transport**

Corner of Carey and Warren Streets  
Monrovia, Liberia

Phone: +231777285950/+231776679045  
Email: meteoliberia.transport@yahoo.com

**Motto: Weather is everybody  
business**

The Liberia Meteorological Service (LMS) is responsible for providing meteorological services to support the social and economic progress of Liberia, ensure the safety and well-being of its population, and fulfil its international obligations.

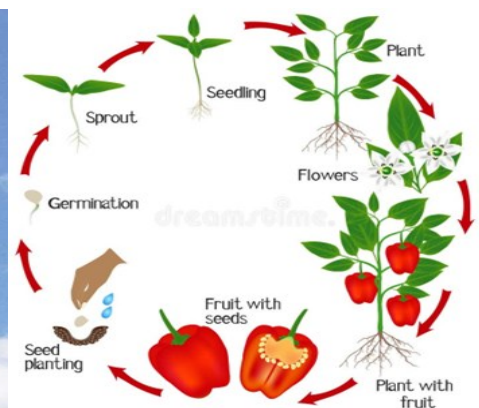
It was created by an Act of Legislation in April 1972 and was placed under the Ministry of Transport. Prior to that, it was under the Ministry of Commerce, Industry and Transportation.



**Hot pepper**



**MET. Observation**



**Phenology of pepper**