

REPUBLIC OF LIBERIA
MINISTRY OF TRANSPORT
DIVISION OF METEOROLOGY
LIBERIA METEOROLOGICAL SERVICE (LMS)
Contact us: +231886565078/+231776679045

Email: meteoliberia.transport@yahoo.com/website: <https://meteoliberia.com>



CLIMATE AND HEALTH BULLETIN FOR THE MONTH OF MAY
2026



1.0. HIGHLIGHTS OF THE CLIMATE AND HEALTH BULLETIN FOR MAY 2026

Rainfall:

Forecasted cumulative rainfall across Liberia is expected to range between 181.6 mm and 388.7 mm. The coastal region is anticipated to record the highest rainfall amount. The central region is anticipated to record rainfall amount between 220-270mm during the period under review. Nevertheless, the north of the country is predicted to experience low rainfall between 170-220.0mm during the period under review.

Relative Humidity:

High relative humidity is predicted in the southeast region affecting Rivergee, Grand Gedeh, Sinoe, Maryland and Grand Kru counties. The western region is expected to receive low relative humidity. However, the central region is predicted to experience moderate relative during this period. Average relative humidity within the month of MAY 2026 is predicted to range from 79.9% to 86.5%..

Temperature:

Maximum temperature: Expected between 28.8°C and 31.7°C. Lofa and part of Gbapolu county are anticipated to experience low mean temperature, while the other parts of the country are expected to observe an increase in average temperature.

Minimum temperature: Forecasted to range from 21.6°C to 26.7°C. The highest minimum temperature is anticipated to occur along the coastal region including counties such as Maryland, Grand Kru, Sinoe, Rivercess, Grand Bassa, Margibi and Montserrado while the lowest minimum temperature is expected in Lofa and parts of Nimba, Bong, Gbapolu and Grand Gedeh counties.

Mean temperature: Expected between 25.6°C and 28.0°C, with relatively lower averages in Lofa and parts of Gbarpolu, county.

Malaria Cases:

Predicted malaria incidence ranges from 4.38 to 11.1 cases per 100 persons. highest malaria cases are expected in parts of Margibi, Grand Bassa, Sinoe and Grand Kru counties. Low malaria cases are expected to occur in Lofa and parts of Gbapolu, Bong and Nimba counties while high malaria cases are expected in the south or coastal counties

Malaria Vigilance:

Climatic conditions indicate a high risk of malaria transmission in most parts of the country, and lower vigilance cases are expected to occur in parts of Lofa and part of Gbapolu county.

Medication Instability Vigilance:

Forecasted Temperature and relative humidity anticipated in May 2026 are likely to cause drug and medication instability across Liberia. Based on the predicted weather elements (temperature and relative humidity), high vigilant is expected in Nimba, Bong, Bomi, Montserrado and G. Cape Mount. Nevertheless, moderate medical instability vigilance is prescribed in the rest of the counties.

MEDICAL ADVISORY FOR MAY 2026

Based on the forecasted climatic conditions for MAY 2026, which may favor increased mosquito breeding and the spread of vector-borne diseases, medical personnel, individuals, and stakeholders in the health sector are advised to take the following precautionary measures:

Carry malaria medication when traveling to high-risk areas, particularly regions prone to increased rainfall and standing water. **Adhere to prescribed malaria prophylaxis** (preventive medication), especially for vulnerable groups and individuals residing in or visiting high-risk zones.

Seek prompt medical attention at recognized health facilities when symptoms of malaria such as fever, chills, headache, or body weakness are observed.

Store all medications properly in a safe, cool, and dry place to prevent spoilage, contamination, or loss of effectiveness.

Promote the use of insecticide-treated mosquito nets (ITNs), especially during nighttime, to reduce exposure to mosquito bites. **Maintain clean surroundings** by eliminating stagnant water and improving sanitation to limit mosquito breeding sites.

Strengthen community awareness and surveillance by encouraging early reporting of suspected malaria cases and supporting public health interventions.

2.0 GENERAL OUTLOOK FOR 1ST TO 31TH MAY 2026

2.1 Rainfall Amount

In MAY 2026, the forecasted cumulative rainfall amount across the counties is anticipated to be between 181.9mm and 388.7mm. The coastal region is anticipated to record the highest rainfall amount. The central region is anticipated to record rainfall amount between 220-270mm during the period under review. Nevertheless, the north of the country is predicted to experience low rainfall between 170-220.0mm during the period under review (figure 1).

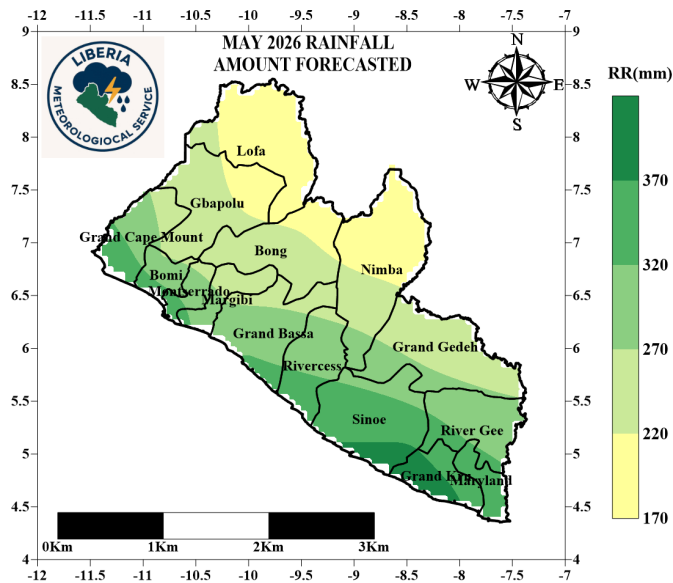


Figure 1: Rain forecasts for MAY 2026

2.2 Relative Humidity (RH)

During the month of MAY high relative humidity is predicted in the southeast region affecting Riverge, Grand Gedeh, Sinoe, Maryland and Grand Kru counties. The western region is expected to receive low relative humidity. However, the central region is predicted to experience moderate relative during this period. Average relative humidity within the month of MAY 2026 is predicted to range from 79.9% to 86.5%. (Figure 2).

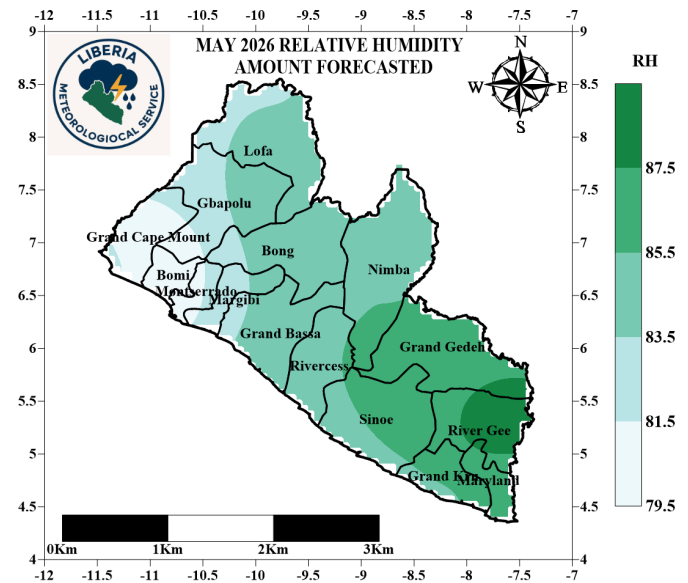


Figure 1: Relative humidity forecasts for MAY 2026

2.3 Maximum Temperature

The maximum temperature in MAY 2026 is anticipated to range between 28.8°C to 31.7°C across the Country. High temperature is expected in G. Cape Mount, Bomi, Montrerrado, parts of Gbarpolu, Bong and Nimba counties. Other parts of the country is anticipated to receive moderate temperature (figure 3).

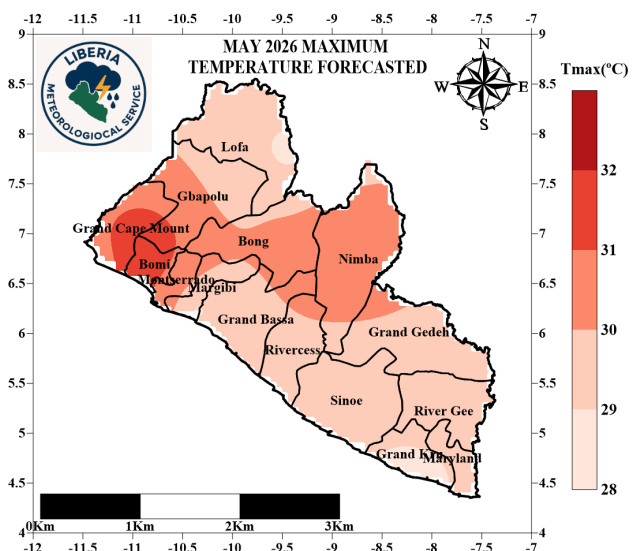


Figure 3: Tmax forecasts for MAY 2026

2.4 Minimum (Nighttime) Temperature : Minimum temperature across the country in May 2026 is anticipated to range between 21.6°C and 26.7°C. The highest minimum temperature is anticipated to occur along the coastal region including counties such as Maryland, Grand Kru, Sinoe, Rivercess, Grand Bassa, Margibi and Montserrado while the lowest minimum temperature is expected in Lofa and parts of Nimba, Bong, Gbapolu and Grand Gedeh counties (figure 4).

2.5 Mean Temperature : The predicted mean air temperatures for various locations across the country for May 2026 is predicted to be between 25.6°C and 28.0°C. Lofa and part of Gbapolu county are anticipated to experience low mean temperature, while the other parts of the country are expected to observe an increase in average temperature (Figure 5).

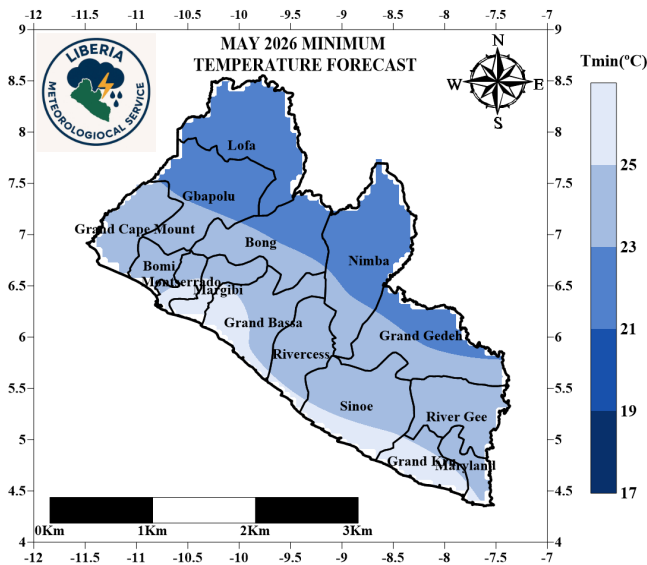


Figure 4: Tmin forecasts for MAY 2026

3.0 Malaria Case

The predicted malaria case for various locations across the country for the month of May 2026 is between 4.38 to 11.1% cases per one hundred persons. The highest malaria cases are expected in parts of Margibi, Grand Bassa, Sinoe and Grand Kru counties. Low malaria cases are expected to occur in Lofa and parts of Gbapolu, Bong and Nimba counties while high malaria cases are expected in the south or coastal counties (Figure 6).

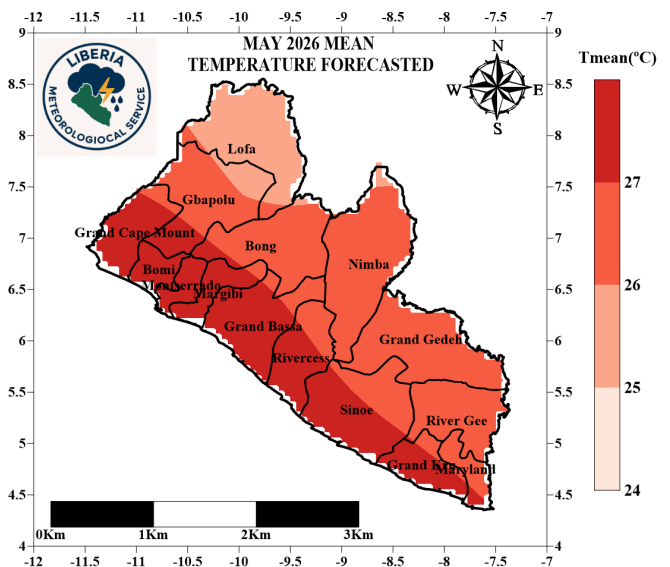


Figure 5: Ave. Temp forecasts for MAY 2026

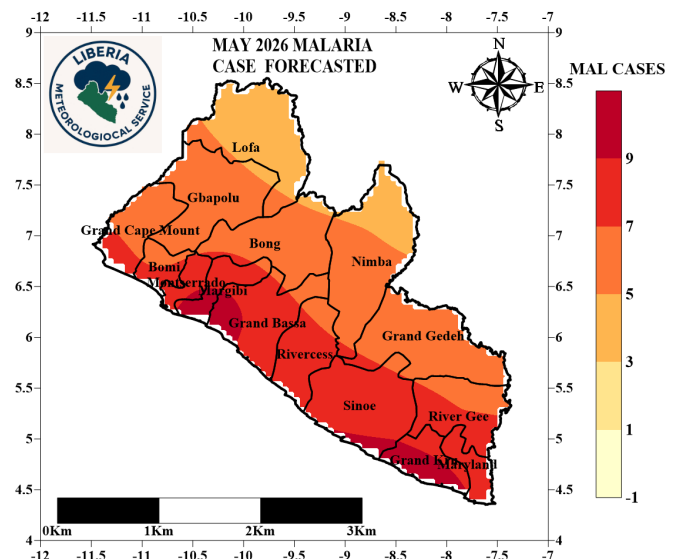


Figure 6: Malaria case forecasts for MAY 2026

4.0 DISEASE VIGILANCE (MALARIA)

The expected climatic conditions in the month of May 2026 suggest a high prospects of malaria incidents across most parts of the country. Nevertheless, low vigilance cases are expected to occur in parts of Lofa and part of Gbapolu county (Figure 7).

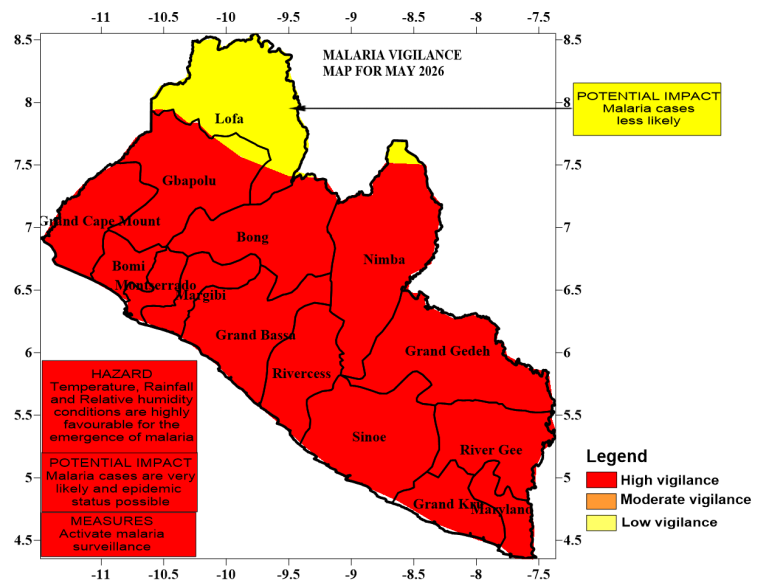


Figure 7: Malaria Vigilance for May 2026

4.1 Malaria threshold, epidemic characteristics and Advisory

	Climate Conditions	Hazard	Potential Impacts	Advisory/Measures
	Temperature between 25°C and 32°C. Relative humidity greater than 80%. Rainfall greater than 80 mm.	High probability of occurrence of malaria cases.	(i) Malaria could be fatal if not treated promptly and properly. (ii) Procurement of drugs for the treatment of malaria is expensive and therefore has adverse impacts on the financial resources of individuals and government.	As much as possible, avoid mosquito bites by using insecticide-treated mosquito nets, fumigating the environment frequently, and clearing drainages and stagnant water around homes.
	Temperature between 20°C and 25°C. Relative humidity between 70% and 80% Rainfall greater than or equal to 80 mm	Moderate probability of occurrence of malaria cases.	(iii) Malaria is usually accompanied by headache, fever, and body aches. These health conditions impact negatively on the patient's daily life.	Early diagnosis and treatment should be emphasized.
	Temperature between 18°C and 20°C Relative humidity between 60% and 70% Rainfall 80 mm	Low probability of occurrence of malaria cases.	(iv) Malaria patients usually feel sick with high fever and shivering chills. As a result, malaria patients cannot undertake normal economic and social activities.	To reduce the risk of contracting malaria, pregnant women are encouraged to take essential precautions such as using mosquito nets coated with pesticides when sleeping and taking anti-malaria prophylaxis.
	Temperature is less than 18°C or greater than 32°C; Relative humidity is less than 60%; Rainfall is less than 80 mm.	The occurrence of Malaria cases is unlikely.		

5.0 Medication Instability

5.1 Medication Instability Vigilance for MAY2026

Temperature and relative humidity anticipated in May 2026 are likely to cause drug and medication instability across Liberia. Based on the predicted weather elements (temperature and relative humidity), high vigilance is expected in Nimba, Bong, Bomi, Montserrado and G. Cape Mount. Nevertheless, moderate medical instability vigilance is prescribed in the rest of the counties (Figure 8).

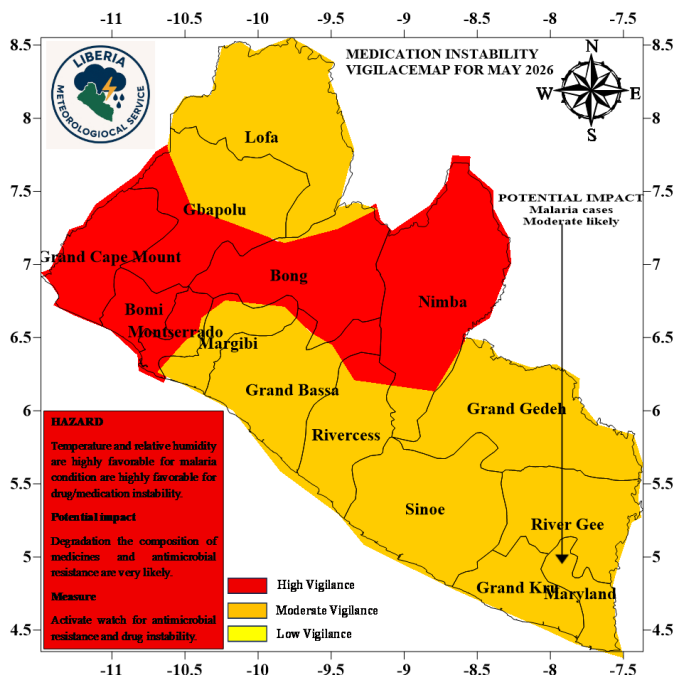


Figure 8: Medication Instability for May 2026

5.2 Medication Instability threshold, potential impacts and Advisory

	Climate Conditions	Hazard	Potential Impacts	Advisory/Measures
	Maximum temperature is greater than 30°C and, Relative humidity is greater than 75%.	These conditions are considered unsafe and unfavorable or inconducive for the storage of medicines.	(i) Drugs may lose their potency. Consequently, patients treated with such medications are not likely to recover or respond to treatment as desired. (ii) Microorganisms that cause some diseases may develop antimicrobial resistance (AMR). (iii) Recovery of patients will be retarded when they are treated with antibiotics that have been exposed to weather conditions that affect their stability.	In areas with high medication instability vigilance thresholds, there is a need for greater caution when moving and storing medications. Medicines should always be stored and transported using facilities with controlled temperature and humidity.

	<p>Maximum temperature is greater than 30°C and Relative humidity is less than 75%.</p> <p>OR</p> <p>Maximum temperature < 30°C and Relative humidity > 75%.</p>	<p>The predicted temperatures and relative humidity are likely to cause depreciation in the quality of medicines.</p>	<p>Microorganisms that cause diseases are likely to develop antimicrobial resistance (AMR) when patients are treated with antibiotics that have lost their potency due to exposure to weather conditions that affect their stability.</p>	<p>Temperature and humidity monitoring systems for transporting and storing medicines are advised.</p>
	<p>Maximum temperature is between 25°C and 30°C; Relative humidity is between 70% and 75%.</p>	<p>Unconducive weather conditions tend to shorten the shelf life of medicines and could affect their overall potency.</p>		<p>Medical professionals should also advise patients on the proper storage of their medications to avoid degradation and loss of potency.</p>

6.0 Heat Index

6.1 Heat Index Vigilance for MAY 2026

During the forecasted period, caution heat index is prescribed over the country during the month of May. Heat index is predicted between 28°C to 32.0°C. Montserrado and Grand Cape Mount counties are forecasted to experience extreme heat during the period under review. However, Lofa county is predicted to experience low (normal) heat index (Figure 9).

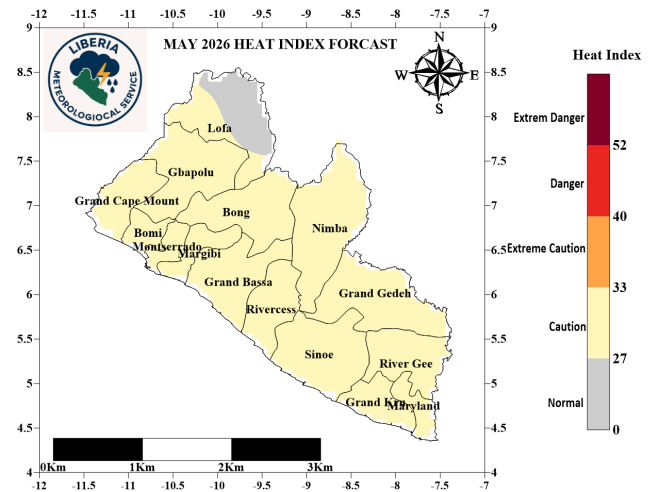


Figure 9: Heat Index for MAY2026

6.2 Heat Index threshold, potential impacts and Advisory

	Climate Conditions	Hazard	Potential Impacts	Advisory/Measures
	Heat Index between 40°C and 52°C	The danger and extreme danger of heat stress are probable.	People in the affected areas are likely to be more susceptible to heat stroke, exhaustion, loss of concentration, and possible damage to the brain, liver, and heart, which may lead to fainting.	Use shades when engaging in outdoor activities to avoid direct exposure to heat from the sun.
	Heat Index between 33°C and 39°C	Moderate probability of heat stress.	Persistent and increased respiration rates can lead to exhaustion and fainting.	Work and other outdoor activities should be carried out when the intensity of solar radiation is not severe.
	Heat Index between 27°C and 32°C	A low probability of heat stress is likely.	Thirst, loss of appetite, and fatigue. It may lead to other abnormal health conditions such as heat rash.	Reduce physically demanding labour when the weather is hot.