



REPUBLIC OF LIBERIA
MINISTRY OF TRANSPORT
DIVISION OF METEOROLOGY
LIBERIA METEOROLOGICAL SERVICE (LMS)
Contact us: +231886565078/+231776679045



Email: meteoliberia.transport@yahoo.com/website: <https://meteoliberia.com>

VOLUME N° 14: SECOND DEKAD OF MAY 2026



Summaries

- ◆ RAINFALL ANALYSIS
- ◆ TEMPERATURE ANALYSIS
- ◆ POTENTIAL EVAPOTRANSPIRATION
- ◆ LIVELIHOOD COMFORTABILITY INDEX
- ◆ VEGETATIVE CONDITION
- ◆ MONTHLY CLIMATE OUTLOOK
- ◆ FARMER ADVISORY

AGROMETEOROLOGICAL CONDITION

Rainfall during the second Dekad of MAY 2026: The second Dekad of May 2026 was characterized by an increase in rainfall amounts across the country. Nationwide, rainfall totals ranged from **38.7mm** to **116mm**, with Maryland, Grand Kru, southeast of Sinoe, southwest of Grand Cape Mount and Bomi counties experiencing the highest rainfall amount. The north, central region, including Bassa and north of Montserrado county experienced moderate rainfall, while the rest of the area recorded the lowest rainfall amounts during this period (figure 1).

Normal rainfall (1990-2020): As compare to the rainfall normal, most parts of country experienced below normal rainfall situation while the southwest of Cape Mount, northeast of Gbapolu, Lofa, southwest of Bassa and south of River-cess experienced normal rainfall conditions (figure 2).

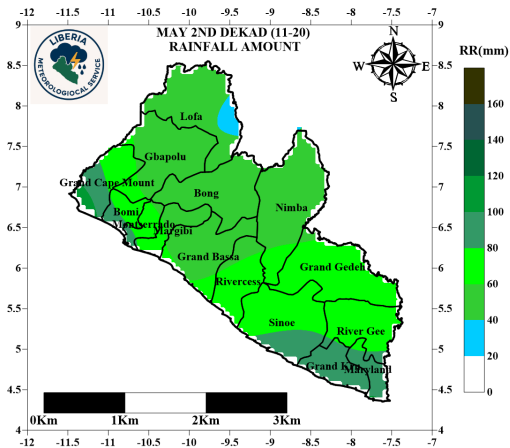


Figure 1: Rainfall Amount

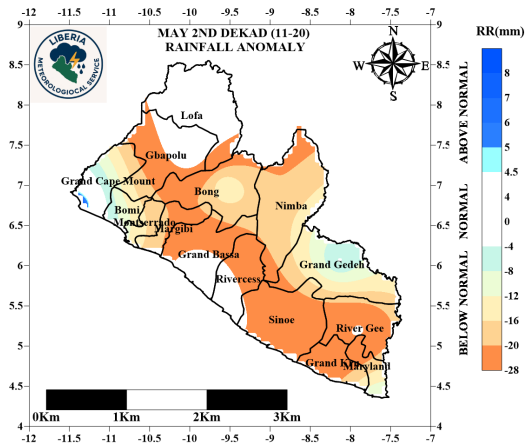


Figure 2: Rainfall Normal (1990-2020)

Number of rainy days during the second Dekad of May 2026: During the second Dekad of May 2026, most parts of the country received rainfall between four to seven days. However, Bomi, Cape Mount and the extreme north of Lofa, south of Gbapolu, and of Montserrado counties recorded the highest number of rainy days. (figure 3).

Soil Moisture Index (SMI) during the second Dekad of MAY 2026: The second DEKAD of MAY 2026 shows a steady increase in soil moistures content across the southern part of the Country. These area experienced above normal moisture content in the soil. However, the central region of the Country observed moderate increased in moisture content in the soil. Lofa, northeast of Gbapolu, North of Bong, north and central of Nimba county experienced normal moisture content in the soil (figure 4).

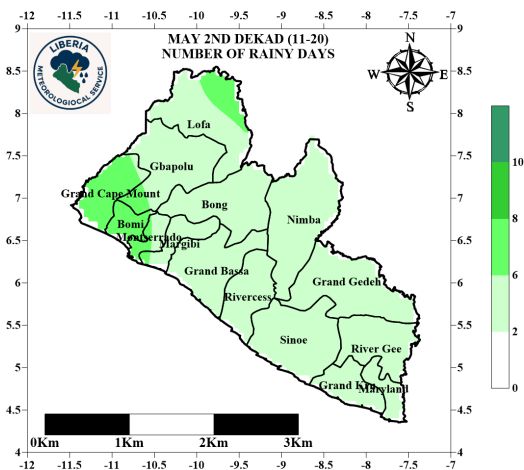


Figure 3: Number of rainy days

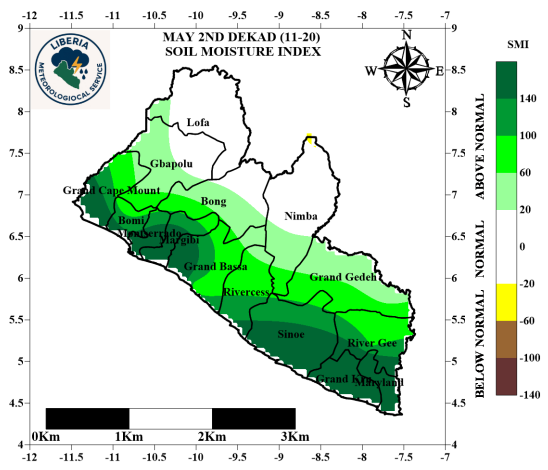


Figure 4: Soil Moisture Index

EVOLUTION OF TEMPERATURES

Maximum Temperature: The second dekad of May 2026 was marked by variation in maximum temperature across the country. Lofa, Grand Kru and the north of Gbarpolu, experienced relatively low maximum temperature. However, the central, southwest, northeast including Rivercess, and east of Bassa experienced the highest maximum temperature. During this period, maximum temperature ranged between 28.5°C and 30.4°C (Figure 6).

Compared to the long-term mean (1990–2020), Lofa, Gbarpolu, northeast Grand Cape Mount and extreme north of Bomi was cooler than normal while the south, southeast of Grand Bassa, west of Sinoe, southwest of Grand Gedeh, south of Nimba, east of Rivergee, south and central of Maryland county experienced warmer condition than normal. Nevertheless, the rest of the counties experienced normal condition during this period (Figure 7).

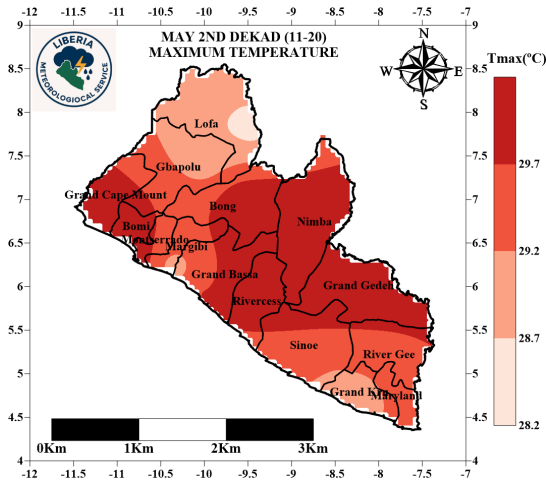


Figure 5: Maximum temperatures at 2m

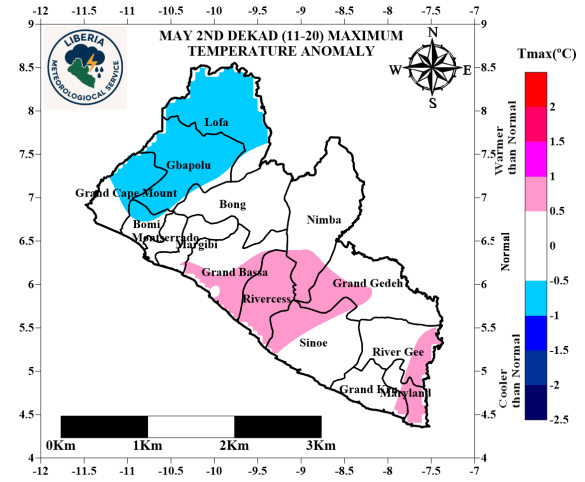


Figure 6: Maximum Temperature Anomaly (1991-2020)

Minimum Temperature: The second Dekad of May 2026 was marked by variation in minimum temperature. Some parts of the coastal counties (Montserrado, Margibi, Bassa, Rivercess, Sinoe, Grand Kru, and Maryland) experienced high minimum temperature, while Lofa, north, central of Nimba and extreme north of Bong county experienced the lowest. Minimum temperature during this period ranged from 22.1°C to 25.0°C (figure 7).

Compared to the long-term mean (1990–2020), Lofa, Gbarpolu, west of Bong, and extreme north of Grand Cape Mount county experienced warmer condition than normal while the other parts of the country experienced normal condition (figure 8).

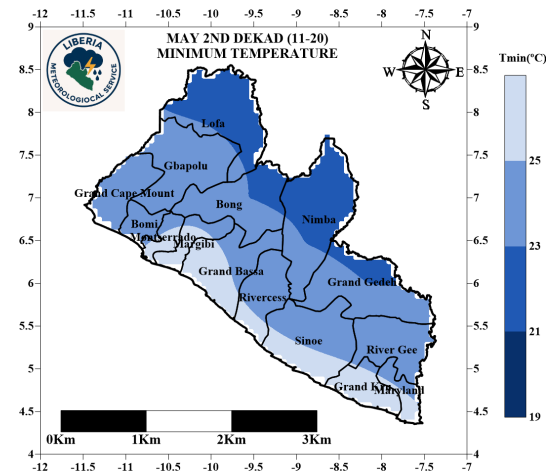


Figure 7: Minimum Temperature at 2m

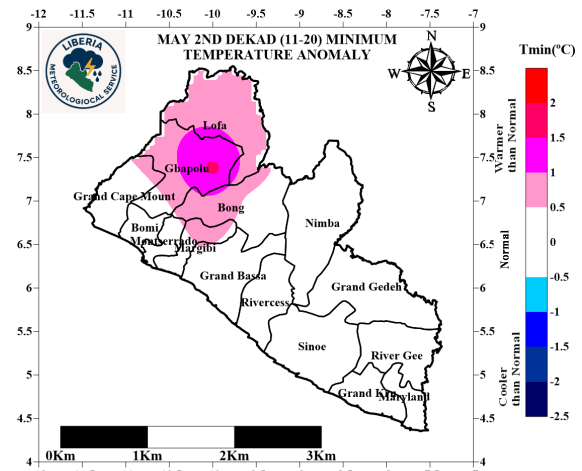


Figure 8: Minimum Temperature Anomaly (1991-2020)

POTENTIAL EVAPOTRANSPIRATION

During the second Dekad of May 2026, the south and western region experienced intense sunshine with high evapotranspiration rates. However, west of Montserrado, south of Margibi and Grand Kru, southeast of Sinoe, west of Grand Bassa county experienced lowest evapotranspiration rate while the north, central of Nimba, northwest of Grand Gedeh and northeast of Bong county experienced high evapotranspiration rate (Figure 9).

Livestock Comfortability Index (LCI): During the second Dekad of May 2026, livestock experienced moderate thermal stress due to rising daytime temperature, moderate humidity, and reduced wind speed. Animals show moderate discomfort and reduced feeding during peak afternoon hours, but no major health risk are anticipated with proper shade and hydration (Figure 10).

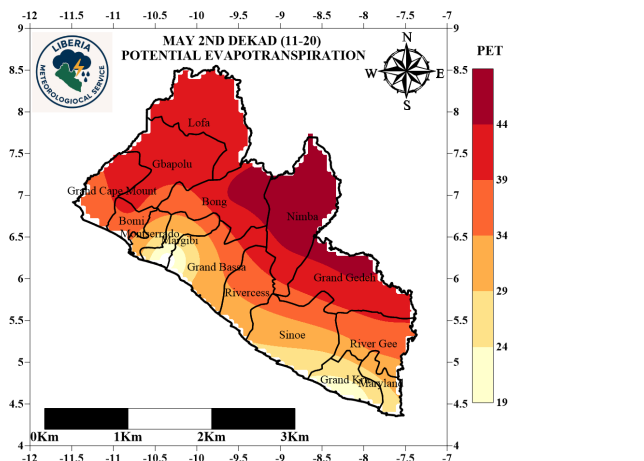


Figure 9: Second DEKAD Potential Evapotranspiration

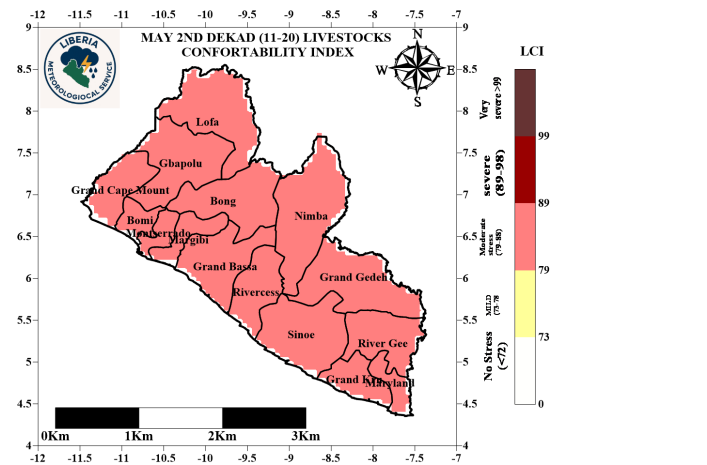


Figure 10: Second DEKAD Livestock Comfortability In-FORECAST FOR THE MONTH OF MAY 2026

Normalized difference Vegetation Index (NDVI): During the second Dekad of May 2026, vegetation is gradually becoming dense. The coastal region experienced dense increase in vegetation with Sinoe and Rivercess becoming more dense. The northern region experienced less dense vegetation during this period with the western region remaining less dense (Figure 10).

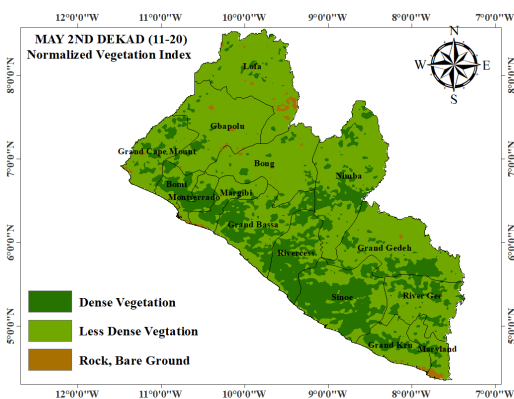


Figure 11: Second DEKAD NDVI

RAINFALL: In May 2026, the forecasted cumulative rainfall amount across all counties is anticipated to be between 181.9mm and 388.7mm. The coastal region is anticipated to record the highest rainfall amount. The central region is anticipated to record rainfall amount between 220-270mm during the period under review. Nevertheless, the north of the country is predicted to experience low rainfall between 170-220.0mm during the period under review (figure 11).

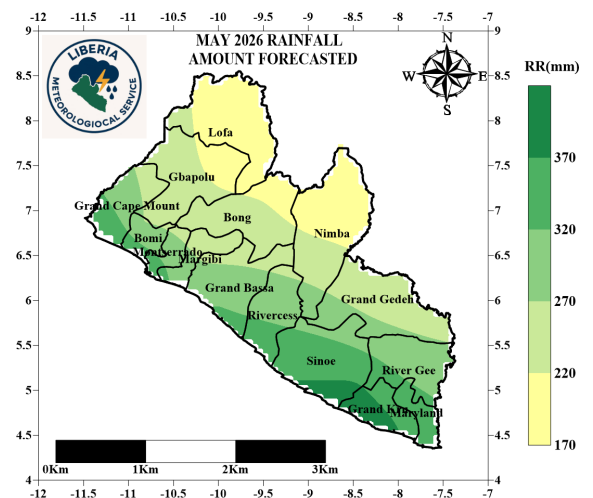


Figure 12: Rain forecasts for May 2026

FORECAST FOR THE MONTH OF MAY 2026

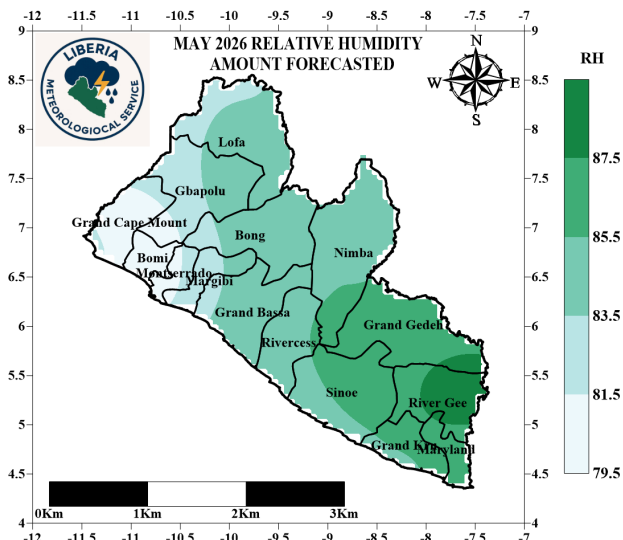


Figure 13: RH forecasts for May 2026

Relative Humidity (RH): During the month of May high relative humidity is predicted in the southeast region affecting Rivergee, Grand Gedeh, Sinoe, Maryland and Grand Kru counties. The western region is expected to receive low relative humidity. However, the central region is predicted to experience moderate relative during this period. Average relative humidity within the month of May 2026 is predicted to range from 79.9% to 86.5% (figure 13).

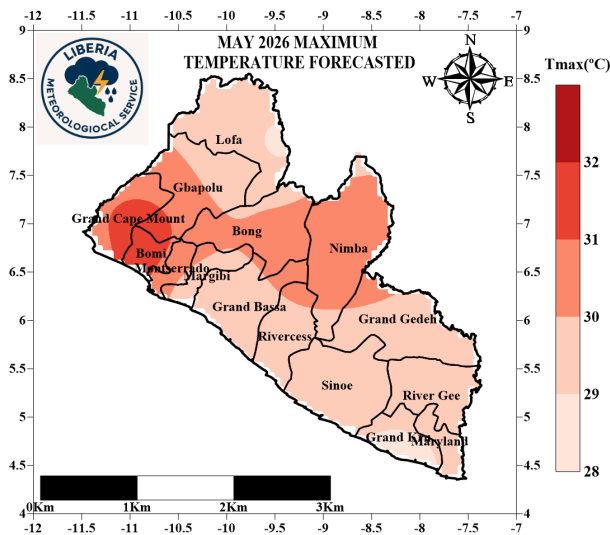


Figure 14: Tmax forecasts for May 2026

Maximum Temperature: The maximum temperature in May 2026 is anticipated to range between 28.8°C to 31.7°C across the Country. High temperature is expected in G. Cape Mount, Bomi, Montserratado, parts of Gbapolu, Bong and Nimba counties. Other parts of the Country is anticipated to receive moderate temperature (figure 14).

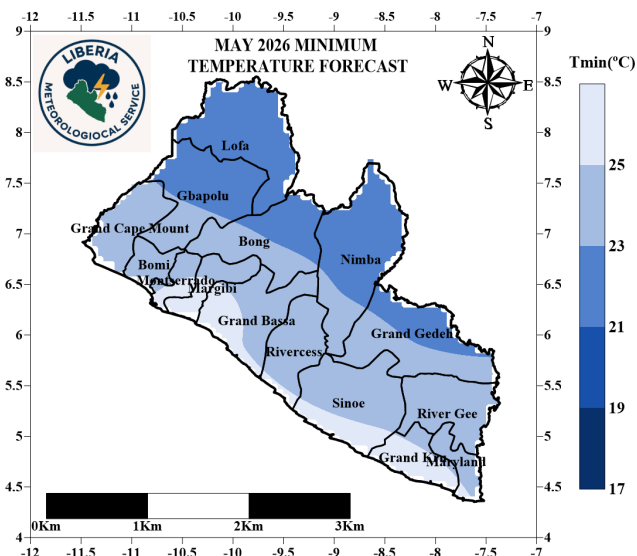


Figure 15: Tmin forecasts for May 2026

Minimum Temperature: Minimum temperature across the country in May 2026 is anticipated to range between 21.6°C and 26.7°C. The highest minimum temperature is anticipated to occur along the coastal region which includes: Maryland, Grand Kru, Sinoe, Rivercess, Grand Bassa, Margibi and Montserratado while the lowest minimum temperature is expected in Lofa and parts of Nimba, Bong, Gbapolu and Grand Gedeh counties (Figure 15).

Farmers Advisories

As rainfall gradually increases, vegetation is becoming denser, rainfall is expected to intensify during the last dekads of May 2026, and soil moisture content continues to improve. Farmers are strongly encouraged to take the following precautions in their agricultural practices:

Field Preparation:

- ◆ Move agricultural activities to upland areas for vegetable and rice production; this will help reduce the risk of damage and maximize yields across the country.
- ◆ Create drainage channels in lowland areas, where possible, to prevent waterlogging during periods of heavy rainfall.
- ◆ Farmers are advised to properly lay out their fields for rice production during the growing season.
- ◆ Farmers are also encouraged to commence the planting of rice and other crops in upland areas.
- ◆ Prepare fields and transplant cocoa seedlings where necessary to ensure better establishment during the rainy season.
- ◆ Prepare nurseries and plant cocoa seeds to support better establishment during the season.

Crop Management:

- ◆ Plant drought- or water-tolerant crop varieties to reduce the risk of crop losses.
- ◆ Monitor crops regularly for signs of disease or stress caused by high evaporation and evapotranspiration.
- ◆ Irrigate crops when high evaporation and evapotranspiration conditions are observed.
- ◆ Clear unwanted grass and weeds from cocoa farms and other agricultural fields to improve airflow and oxygen circulation. This will help improve crop yield.

Livestock Management:

- ◆ Move animals to upland areas to reduce the risk of exposure to heavy rainfall and flooding.
- ◆ Ensure animals are properly housed and maintain good hygiene practices to prevent disease outbreaks.
- ◆ Provide clean drinking water regularly to prevent dehydration and heat stress.
- ◆ Monitor livestock frequently for signs of illness and provide timely treatment when necessary.

General Precautions:

- ◆ Stay informed about weather updates through the Liberia Meteorological Service website (<https://meteoliberia.com>).
- ◆ Work closely with local agricultural extension officers for region-specific advice on crop and livestock management.

By taking these proactive measures, farmers can protect their crops and livestock, reduce losses, and maintain productive agricultural practices during periods of increased rainfall.

Average values of meteorological parameters for the second DEKAD of MAY 2026

Stations	Temperature at two (2) meters			Precipitation	Humidity
	Ave. Tx	Ave. Tn	Ave. Temp	Rainfall Sum	Ave. Hum.
AGBAS81	29.7	25.4	27.6	58	83.4
AGBEL87	28.9	24.0	26.5	40.9	89.8
AGCAR83	30.2	23.0	26.6	55.8	87.8
AGFOY86	29.0	22.4	25.7	48.6	89.0
AGFTI80	30.0	23.5	26.8	66.3	89.3
AGFTW82	29.5	24.0	26.8	69.5	86.9
AGGCM89	30.2	25.0	27.6	116	86.3
AGSAR85	30.1	22.7	26.4	42	87.1
AGVON84	29.0	22.4	25.7	43.4	89.0
AGZOR88	28.5	22.1	25.3	38.7	89.5
RF-06-KAB	29.2	25.3	27.2	86.7	83.4
SYGCA64	28.8	26.2	27.5	99	82.9
SYHAR63	29.6	25.4	27.5	101.1	83.6
SYROB60	28.9	27.2	28.0	62	80.0
SYSPA65	30.1	25.2	27.6	87.5	84.2
SYTPT62	30.4	23.0	26.7	56.6	87.0
SYZWD61	30.2	22.9	26.6	67.7	86.3

LIBERIA METEOROLOGICAL SERVICE

Ministry of Transport

Corner of Carey and Warren Streets
Monrovia, Liberia

Phone: +231777285950/+231776679045
Email: meteoliberia.transport@yahoo.com

Motto: Weather is everybody's business

The Liberia Meteorological Service (LMS) is responsible for providing meteorological services to support the social and economic progress of Liberia, ensure the safety and well-being of its population, and fulfil its international obligations.

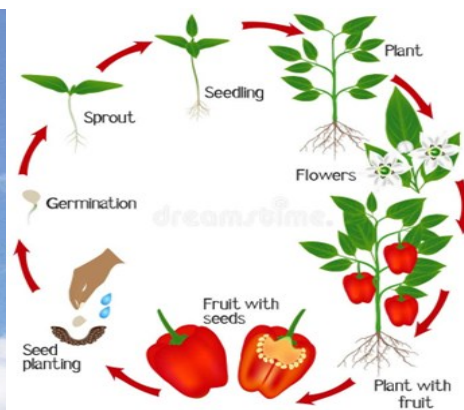
It was created by an Act of Legislation in May 1972 and was placed under the Ministry of Transport. Prior to that, it was under the Ministry of Commerce, Industry and Transportation.



Hot pepper



MET. Observation



Phenology of pepper