



REPUBLIC OF LIBERIA
MINISTRY OF TRANSPORT
DIVISION OF METEOROLOGY
LIBERIA METEOROLOGICAL SERVICE (LMS)
Contact us: +231886565078/+231776679045



Email: meteoliberia.transport@yahoo.com/website: <https://meteoliberia.com>

VOLUME N° 16: FIRST DEKAD OF JUNE 2026



Summaries

- ◆ RAINFALL ANALYSIS
- ◆ TEMPERATURE ANALYSIS
- ◆ POTENTIAL EVAPOTRANSPIRATION
- ◆ LIVELIHOOD COMFORTABILITY INDEX
- ◆ MONTHLY CLIMATE OUTLOOK
- ◆ FARMER ADVISORY

AGROMETEOROLOGICAL CONDITION

Rainfall during the First Dekad of June 2026: The First Dekad of June 2026 was characterized by an increase in rainfall amounts across the country. Nationwide, rainfall totals ranged from **94.0mm** to **282.4mm**, with the south and southwest regions experiencing the highest rainfall amount. The north and central regions experienced moderate rainfall during this period while extreme east of Maryland Rivergee, and Grand Gedeh experienced the lowest amount of rainfall (figure 1).

Normal rainfall (1990-2020): As compare to the rainfall normal, rainfall increase most parts of the country. However, the southeast received normal rainfall. The increase in rainfall has greatly improved moisture content of the soil. This will help crops establishment in different regions of the country (figure 2).

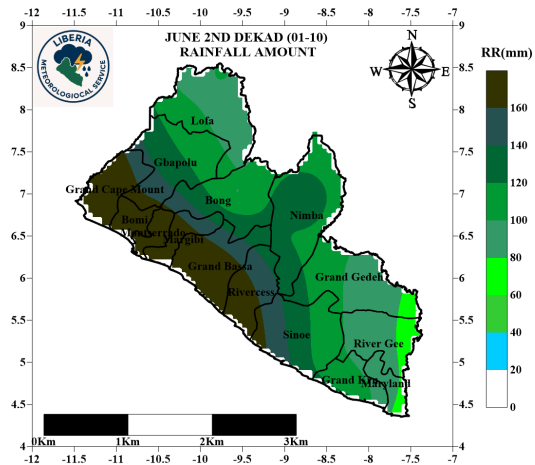


Figure 1: Rainfall Amount

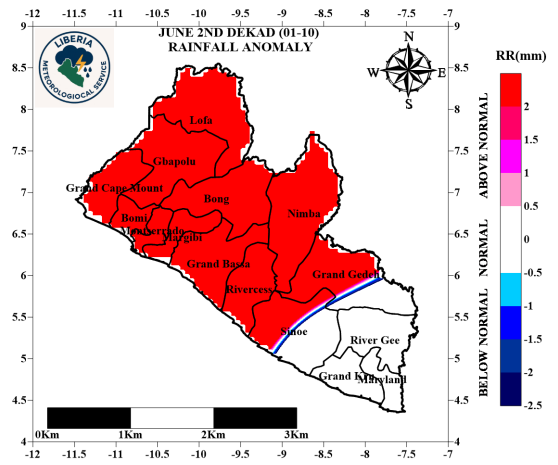


Figure 2: Rainfall Normal (1990-2020)

Number of rainy days during the First Dekad of June 2026: During the First Dekad of June 2026, most parts of the country received rainfall between five to ten days. The south and southwest received the highest number of rainy days while the north and southeast regions recorded less rainy days (figure 3).

Soil Moisture Index (SMI) during the First Dekad of June 2026: The first dekad of June 2026 experienced above-normal soil moisture conditions. This indicates an increase in soil moisture content across the country. These favorable conditions will support crop establishment and growth nationwide (figure 4).

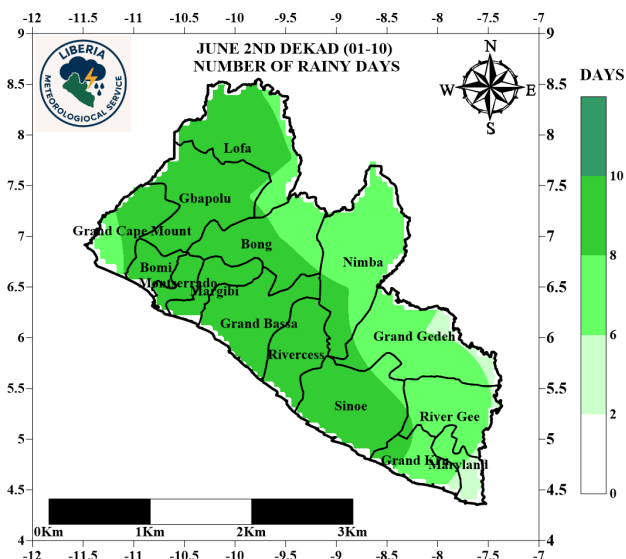


Figure 3: Number of rainy days

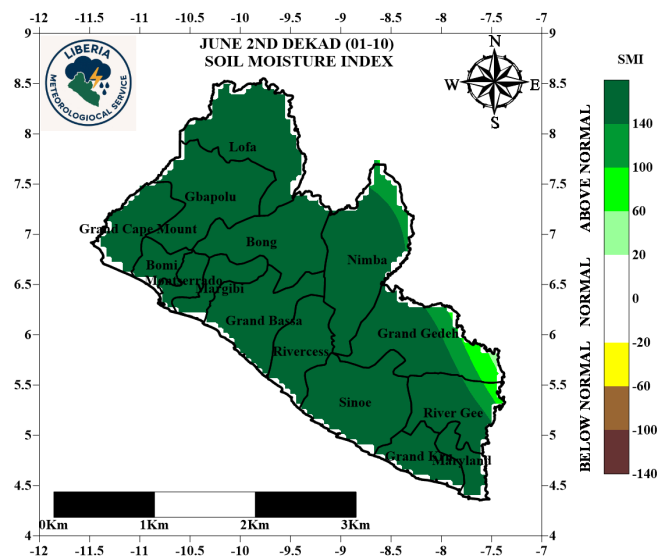


Figure 4: Soil Moisture Index

EVOLUTION OF TEMPERATURES

Maximum Temperature: The First dekad of June 2026 was marked by variation in maximum temperature across the country. Lofa, Gbapolu, Grand Kru and the southeast of Sinoe county experienced relatively low maximum temperature. However, Nimba, east of Bong, north of Rivercess, Grand Bassa, and west of grand Gedeh experienced highest maximum temperature. During this period, maximum temperature ranged between 27.3°C and 29.5°C (Figure 5).

Compared to the long-term mean (1990–2020), the western region experienced cooler conditions. However, southwestern Nimba and Grand Bassa Counties experienced warm condition, while the rest of the country experienced normal conditions during this period (Figure 6).

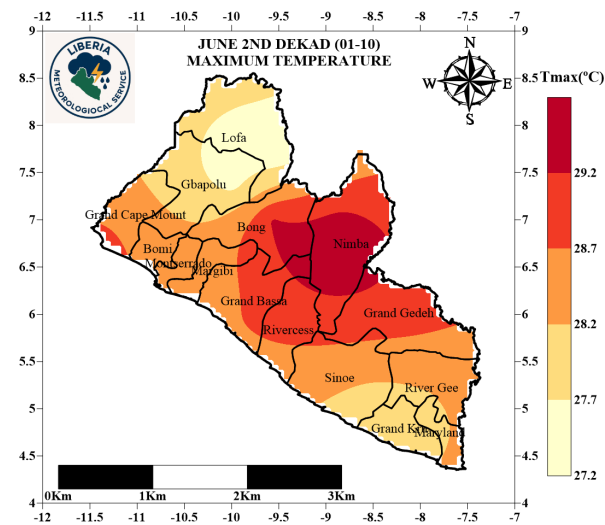


Figure 5: Maximum temperatures at 2m

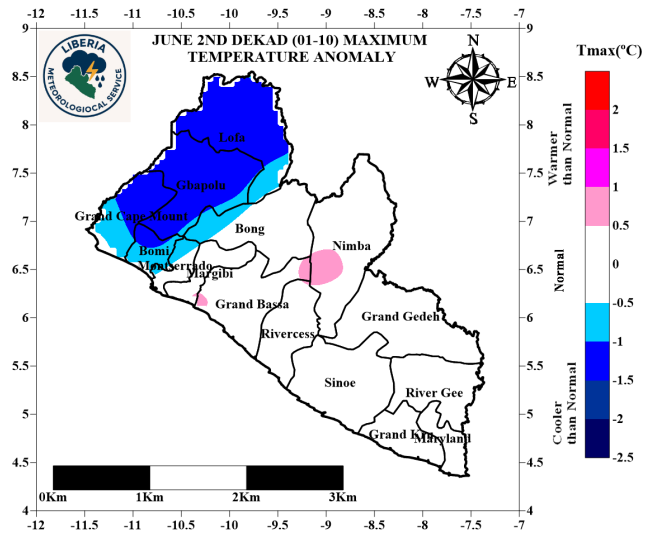


Figure 6: Maximum Temperature Anomaly (1991-2020)

Minimum Temperature: The First Dekad of June 2026 was characterized by variation in minimum temperature. Some parts of the coastal counties (south of Montserrado, Margibi, Bassa, Rivercess, Sinoe, Grand Kru and Maryland) experienced high minimum temperature, while Lofa, north, central of Nimba and extreme north of Bong county experienced the lowest. Minimum temperature during this period ranged from 22.3°C to 26.7°C (figure 7).

Compared to the long-term mean (1990–2020), The country experienced warmer-than-normal conditions during this period. Nevertheless, the northern region recorded higher minimum temperatures, with Gbarpolu County experiencing the highest minimum temperature (figure 8).

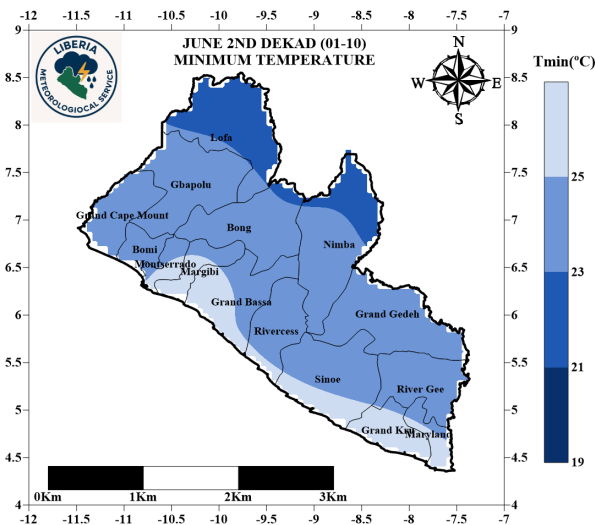


Figure 7: Minimum Temperature at 2m

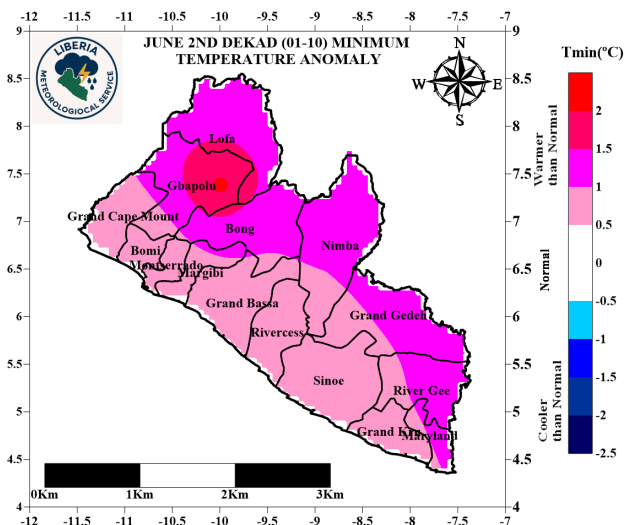


Figure 8: Minimum Temperature Anomaly (1991-2020)

POTENTIAL EVAPOTRANSPIRATION

During the First Dekad of June 2026, Nimba, east of Bong and northwest of Grand Gedeh experienced intense sunshine with high evapotranspiration rates. However, the south (coastal) region experienced lowest evapotranspiration rate while the north while the central region experienced moderate evapotranspiration rate (Figure 9).

Livestock Comfortability Index (LCI): During the First Dekad of June 2026, livestock experienced moderate thermal stress due to rising daytime temperature, moderate humidity, and reduced wind speed. Animals show moderate discomfort and reduced feeding during peak afternoon hours, but no major health risk are anticipated with proper shade and hydration (Figure 10).

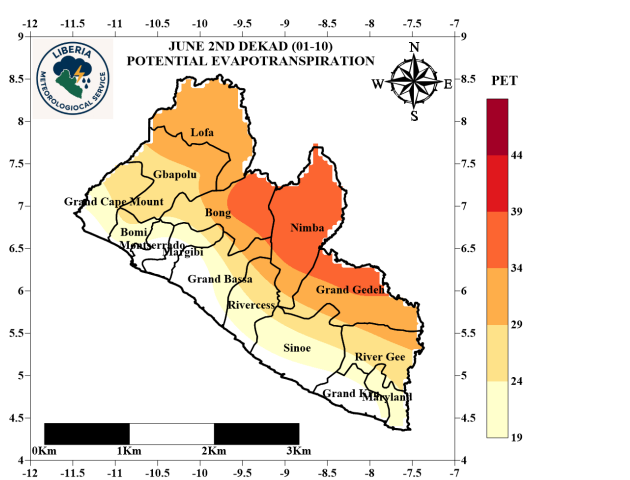


Figure 9: First DEKAD Potential Evapotranspiration

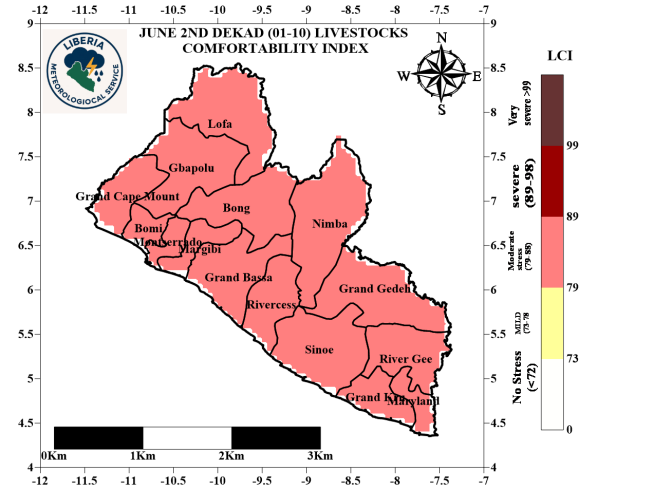


Figure 10: First DEKAD Livestock Comfortability Index

FORECAST FOR THE MONTH OF JUNE

2026

RAINFALL: In June 2026, cumulative rainfall across the counties is expected to increase, with total rainfall expected to ranging between 218.7mm and 754.2mm. The coastal and southern regions are forecast to receive the highest rainfall totals, while the northern parts of the country are expected to record the lowest amounts. Additionally, rainfall is expected to increase significantly in the southwestern region of the country, particularly affecting Grand Cape Mount, Bomi, and Montserrado Counties (figure 11).

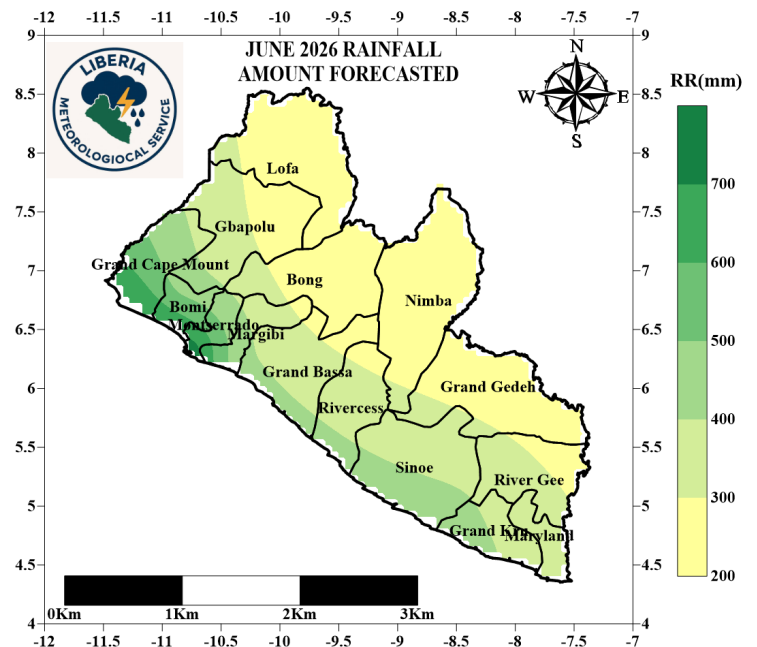
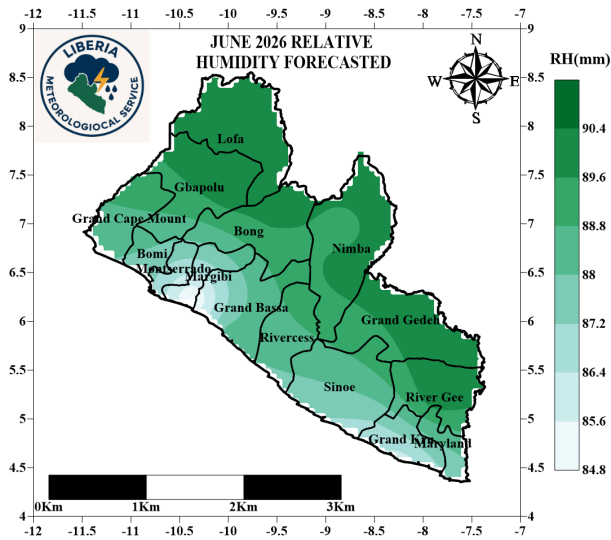


Figure 11: Rain forecasts for June 2026

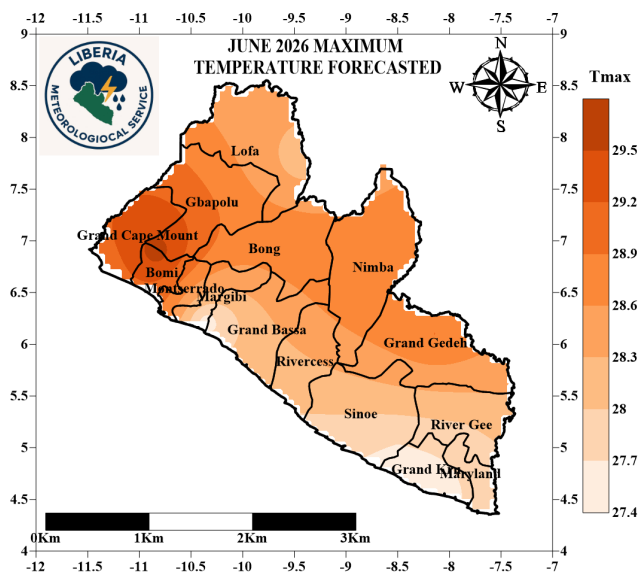
FORECAST FOR THE MONTH OF JUNE 2026



Relative Humidity (RH): During June 2026, high relative humidity is expected to across the northern parts of the country. However, low relatively humidity is anticipated in Montserrado, Margibi, Grand Kru, and the western part of Grand Bassa County.

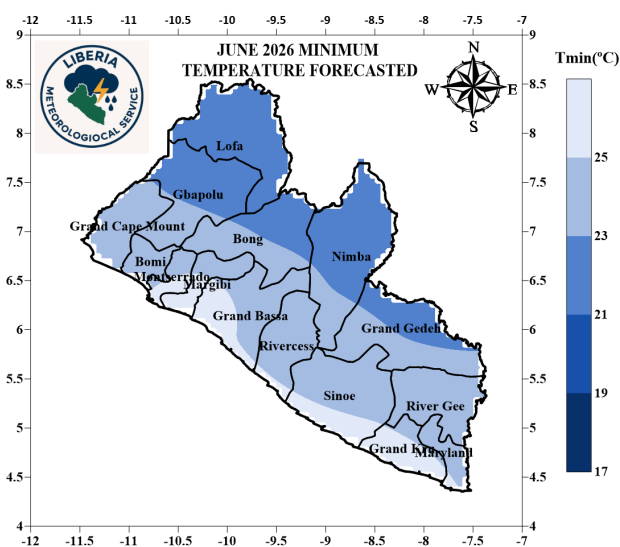
Average relative humidity during the month is forecast to range between 88.2% and 90.2% (figure 12).

Figure 12: RH forecasts for June 2026



Maximum Temperature: Maximum temperature in June 2026 is anticipated to range between 27.5°C to 29.7°C across the Country. High temperature is expected in Grand Cape Mount, Bomu, west of Montserrado and the south of Gbapolu county. Margibi, Grand Bassa, Sinoe, Grand Kru, Lofa and Maryland counties are anticipated to experience low maximum temperature (figure 3). However, moderate maximum temperature is expected in Bong, Nimba, north of Grand Gedeh and Gbapolu counties (figure 13).

Figure 13: Tmax forecasts for June 2026



Minimum Temperature: Minimum temperature across the country in June 2026 is anticipated to range between 21.2°C and 25.0°C. The highest minimum temperature is anticipated to occur along the coastal region including counties such as Maryland, Grand Kru, Sinoe, Rivercess, Grand Bassa, Margibi and Montserrado while the lowest minimum temperature is expected in Lofa and parts of Nimba, Bong, Gbapolu and Grand Gedeh counties (Figure 14).

Figure 14: Tmin forecasts for June 2026

Farmers Advisories

- ◆ As rainfall gradually increases across the country, vegetation is becoming denser and soil moisture conditions have also improved. Rainfall is expected to intensify during the coming decades of June 2026. Therefore, farmers are strongly encouraged to take the following precautions in their agricultural practices:

Field Preparation:

- ◆ Farmers are advised to continue vegetable and rice production in the upland areas; this will help reduce the risk of damage and maximize yields across the country. Properly layout field and create channel to prevent erosion in the field
- ◆ Create drainage channels in lowland areas, where possible, to prevent waterlogging during periods of heavy rainfall.
- ◆ Farmers are advised to properly lay out their fields for rice production during the growing season.
- ◆ Farmers are also encouraged to commence the planting of rice and other crops in upland areas.
- ◆ Prepare fields and transplant cocoa seedlings where necessary to ensure better establishment during the rainy season.
- ◆ Prepare nurseries and plant cocoa seeds to support better establishment during the season.

Crop Management:

- ◆ Plant drought- or water-tolerant crop varieties to reduce the risk of crop losses.
- ◆ Monitor crops regularly for signs of disease or stress caused by high evaporation and evapotranspiration.
- ◆ Clear unwanted grass and weeds from cocoa farms and other agricultural fields to improve airflow and oxygen circulation. This will help improve crop yield.

Livestock Management:

- ◆ Properly prepare your animal house
- ◆ Ensure animals are properly housed and maintain good hygiene practices to prevent disease outbreaks.
- ◆ Provide clean drinking water regularly to prevent dehydration and heat stress.
- ◆ Monitor livestock frequently for signs of illness and provide timely treatment when necessary.

General Precautions:

- ◆ Stay informed about weather updates through the Liberia Meteorological Service website (<https://meteoliberia.com>).
- ◆ Work closely with local agricultural extension officers for region-specific advice on crop and livestock management.

By taking these proactive measures, farmers can protect their crops and livestock, reduce losses, and maintain productive agricultural practices during periods of increased rainfall.

Average values of meteorological parameters for the third DEKAD of JUNE 2026

Stations	Temperature at two (2) meters			Precipitation	Humidity
	Ave. Tx	Ave. Tn	Ave. Temp	Rainfall Sum	Ave. Hum.
AGBAS81	28.6	25.2	26.9	221.5	86.7
AGBEL87	27.6	24.0	25.8	113.7	92.2
AGCAR83	29.2	23.3	26.3	99.5	90.3
AGFOY86	27.9	22.4	25.1	94.6	90.7
AGFTI80	28.4	23.5	26.0	171.9	92.3
AGFTW82	28.2	24.2	26.2	85.6	90.5
AGGCM89	28.8	24.9	26.9	272	88.1
AGSAR85	29.4	23.2	26.3	139.2	89.8
AGVON84	27.9	22.4	25.1	101.4	90.7
AGZOR88	27.3	22.3	24.8	90.8	91.5
RF-06-KAB	27.9	25.2	26.5	107.6	88.0
SYGCA64	27.7	26.0	26.9	121.9	86.1
SYHAR63	28.3	25.4	26.8	77.5	87.2
SYROB60	28.3	26.7	27.5	200.1	82.1
SYSPA65	28.7	25.1	26.9	282.4	87.4
SYTPT62	29.5	23.2	26.3	117.8	89.8
SYZWD61	29.0	23.2	26.1	94	90.0

LIBERIA METEOROLOGICAL SERVICE

Ministry of Transport

Corner of Carey and Warren Streets
Monrovia, Liberia

Phone: +231777285950/+231776679045

Email: meteoliberia.transport@yahoo.com

Motto: Weather is everybody's business

The Liberia Meteorological Service (LMS) is responsible for providing meteorological services to support the social and economic progress of Liberia, ensure the safety and well-being of its population, and fulfil its international obligations.

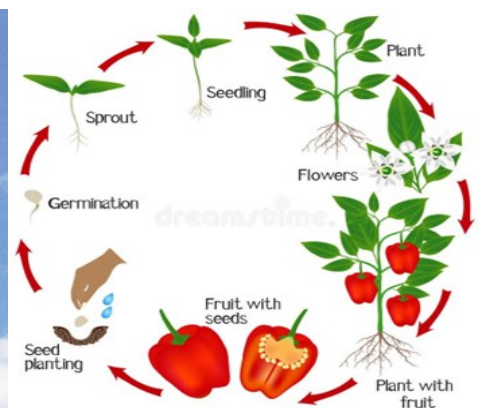
It was created by an Act of Legislation in June 1972 and was placed under the Ministry of Transport. Prior to that, it was under the Ministry of Commerce, Industry and Transportation.



Hot pepper



MET. Observation



Phenology of pepper