



Ministry of Transport

1



MINISTRY OF TRANSPORT

**LIBERIA METEOROLOGICAL  
SERVICE**



**WEEKLY WEATHER FORECAST BULLETIN NO: 2025012002**

**ISSUED ON: 16<sup>th</sup> DECEMBER 2025.**

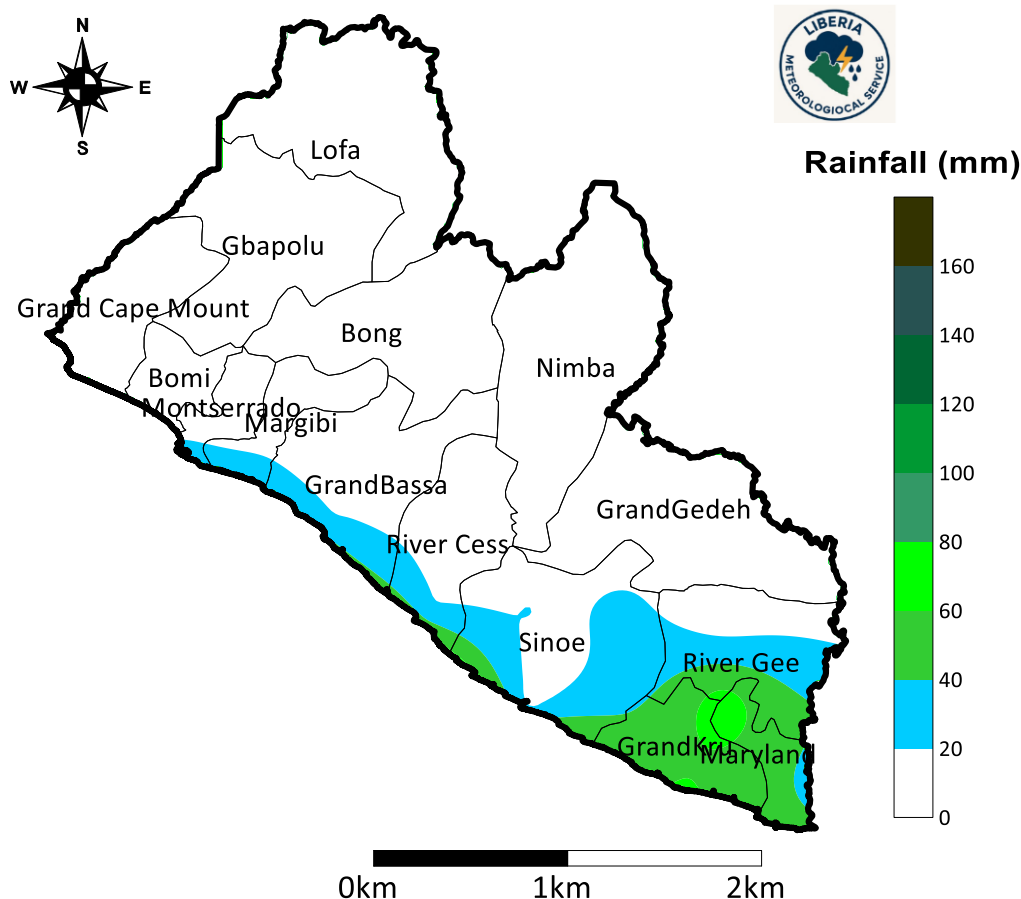
**VALID: FROM 16<sup>th</sup> DECEMBER 2025 TO 21<sup>st</sup> DECEMBER 2025.**

### **REMARKS**

During the week, the Madden-Julian Oscillation (MJO) is expected to be weak over the West African region. Good moisture influx and velocity potential are expected to enhance the prospects of Moderate to Heavy rainfall amounts over parts of River Cess, Sinoe, Grand Kru, Maryland, and River Gee counties. Low to Moderate rainfall is expected over parts of Grand Bassa, Margibi, Montserrado, River Cess, Sinoe, Grand Kru, Maryland, and River Gee counties.

**Advisory:** There are prospects of flash floods on roads, bridges & low-lying areas which can disrupt vehicular traffic. The public is advised to take necessary safety precautions; do not walk through fast-flowing runoff waters.

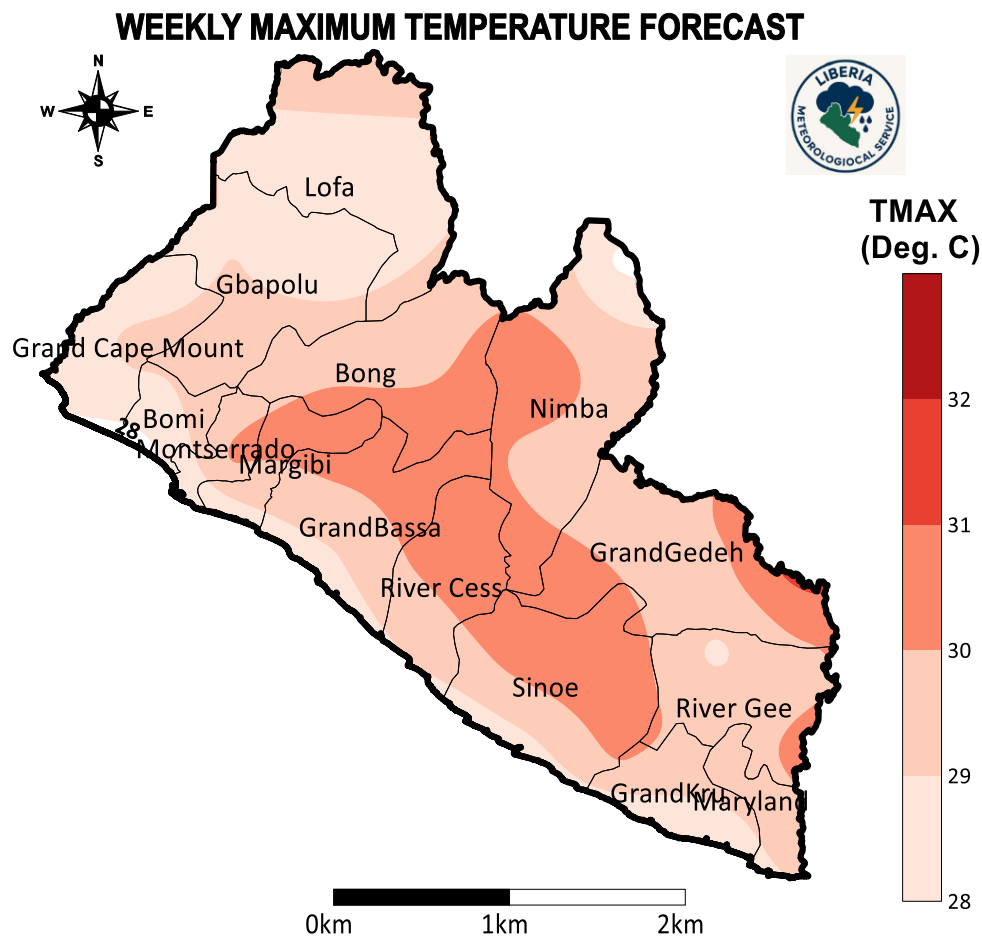
### **WEEKLY TOTAL RAINFALL AMOUNT FORECAST**



**FIGURE 1: SPATIAL DISTRIBUTION OF ANTICIPATED RAINFALL.**

## 2.1 Maximum Temperature

A Maximum Temperature range of 35 – 40°C is not anticipated anywhere in Liberia. A temperature range of 30 – 35 °C is expected over parts of Bong, Grand Bassa, Grand Gedeh, Margibi, Montserrado, River Cess, Sinoe, Grand Gedeh, River Gee, and Nimba counties. A temperature range of 25 – 30 °C is expected over the remaining parts of the country. See Fig. 2.

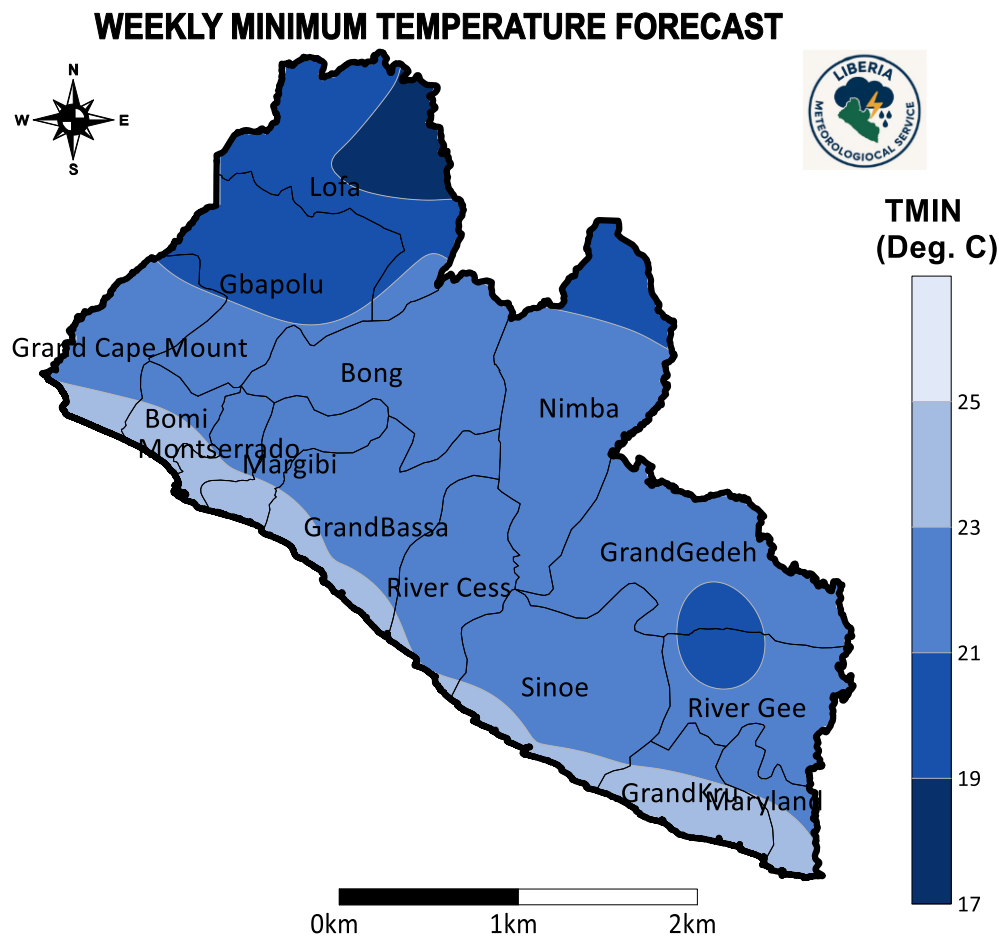


**FIGURE 2: SPATIAL DISTRIBUTION OF MAXIMUM TEMPERATURE FORECAST.**

For more details: [www.nimet.gov.ng](http://www.nimet.gov.ng); [cfo@nimet.gov.ng](mailto:cfo@nimet.gov.ng)

## 2.2 Minimum Temperature

A Minimum temperature range of 23 - 25 °C is expected along the coastal parts of Bomi, Grand Cape Mount, Montserrado, Margibi, Grand Bassa, River Cess, Sinoe, Grand Kru, and Maryland counties. While a minimum temperature range of 20 - 23 °C is expected over most parts of the country, parts of Gbapolu, Grand Gedeh, Grand Cape Mount, Lofa, River Cess, and Nimba counties should expect nighttime temperatures in the range of 15 -20 °C. See Figure 3.



**FIGURE 3: SPATIAL DISTRIBUTION OF MINIMUM TEMPERATURE FORECAST.**

For more details: [www.nimet.gov.ng](http://www.nimet.gov.ng); [cfo@nimet.gov.ng](mailto:cfo@nimet.gov.ng)