

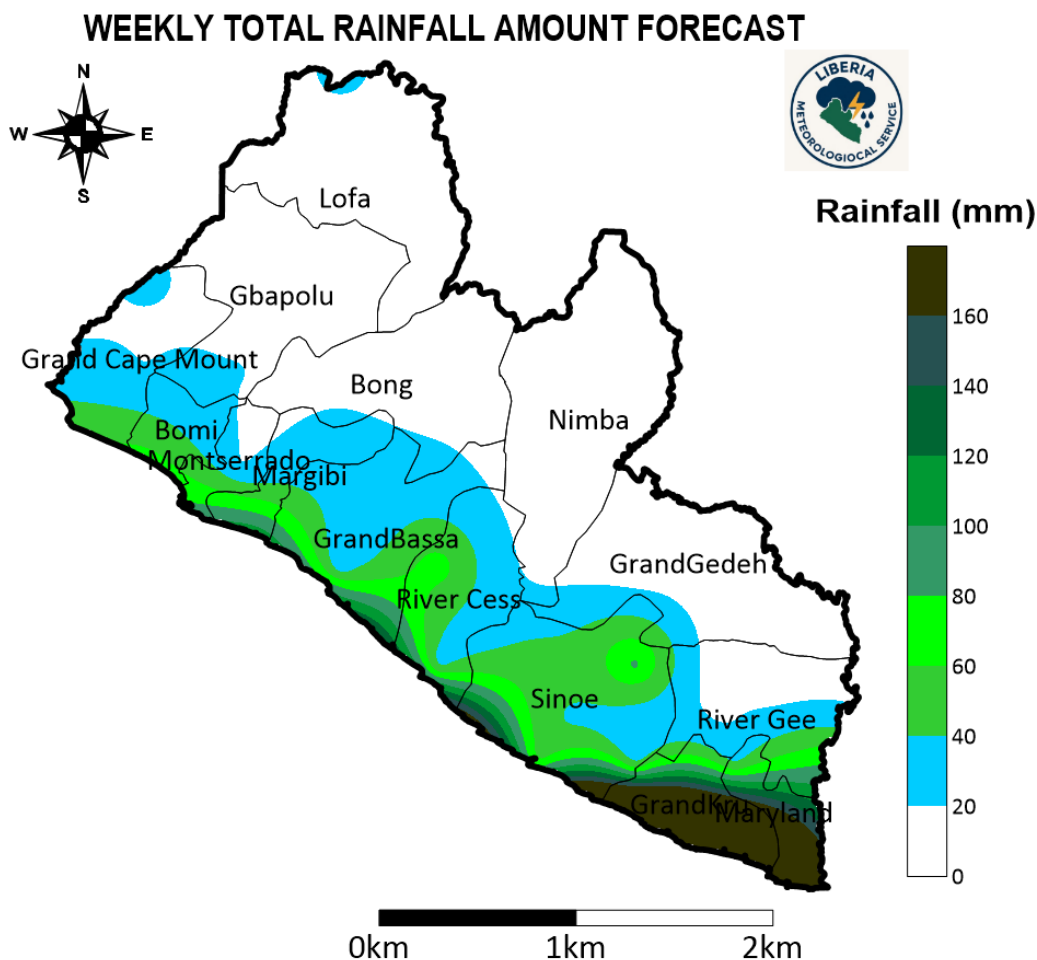
**WEEKLY WEATHER FORECAST BULLETIN NO: 202512003**  
**ISSUED ON: 23<sup>rd</sup> DECEMBER 2025.**  
**VALID: FROM 23<sup>rd</sup> DECEMBER 2025 TO 29<sup>th</sup> DECEMBER 2025.**

## 1.0 Rainfall

### REMARKS

Heavy rainfall (100 mm and above) is expected over most parts of Grand Kru and Maryland counties, and the coastal parts of Sinoe, River Cess and Grand Bassa. Moderate to Heavy rainfall (75 – 100 mm) is expected over parts of Grand Kru, Maryland, Sinoe, River Cess, Grand Bassa, River Gee, Margibi, and Montserrado counties. Moderate rainfall (50 – 75 mm) is likely over parts of Grand Kru, Maryland, Sinoe, River Cess, Grand Bassa, River Gee, Margibi, Bomi, Grand Cape Mount and Montserrado counties. Low to Moderate rainfall (25 – 50 mm) is likely over parts of Grand Kru, Maryland, Sinoe, River Cess, Grand Bassa, River Gee, Margibi, Bomi, Grand Cape Mount, Montserrado, southern Grand Gedeh, southern Bong, and southern Gbapolu counties. Low to no rainfall (0 – 20 mm) is likely over most parts of Gbapolu, Lofa, Bong, Nimba, Grand Gedeh, northern Grand Cape Mount and northern River Gee counties.

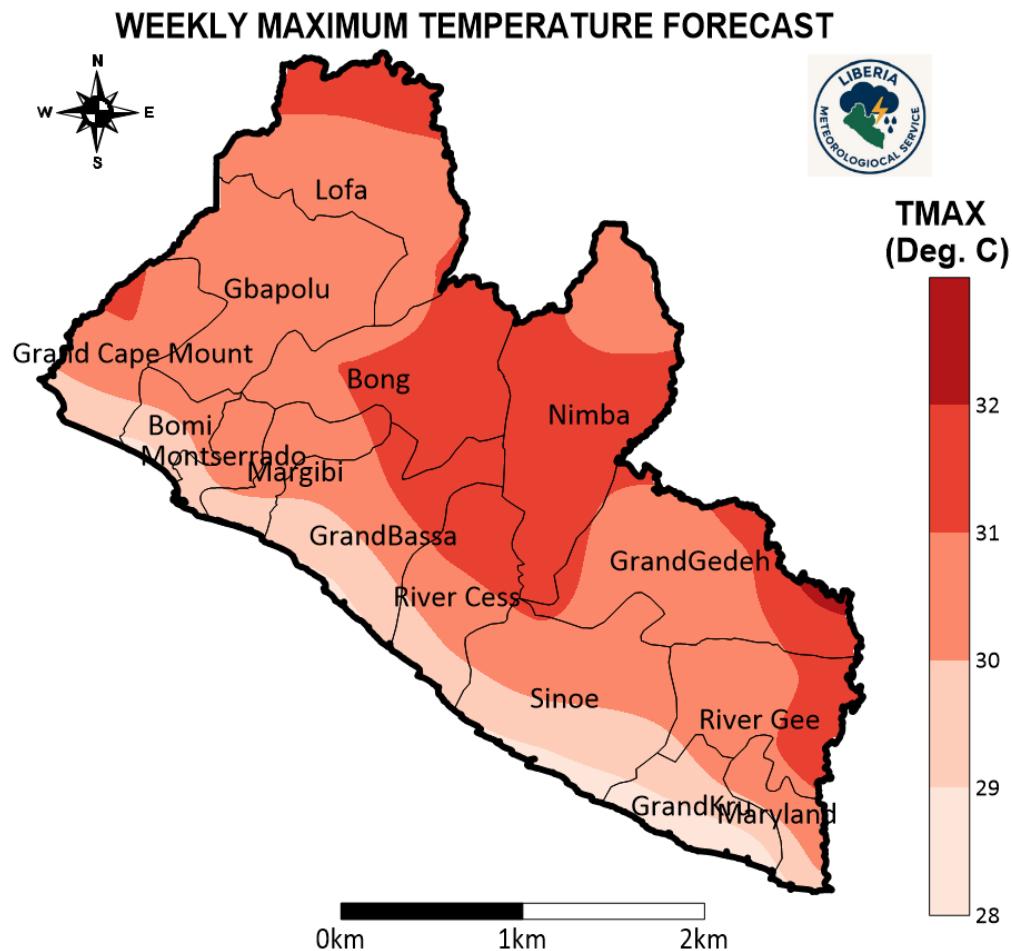
**Advisory:** There are prospects of flash floods on roads, bridges & low-lying areas which can disrupt vehicular traffic. The public is advised to take necessary safety precautions; do not walk through fast-flowing runoff waters.



**FIGURE 1: SPATIAL DISTRIBUTION OF ANTICIPATED RAINFALL.**

## 2.1 Maximum Temperature

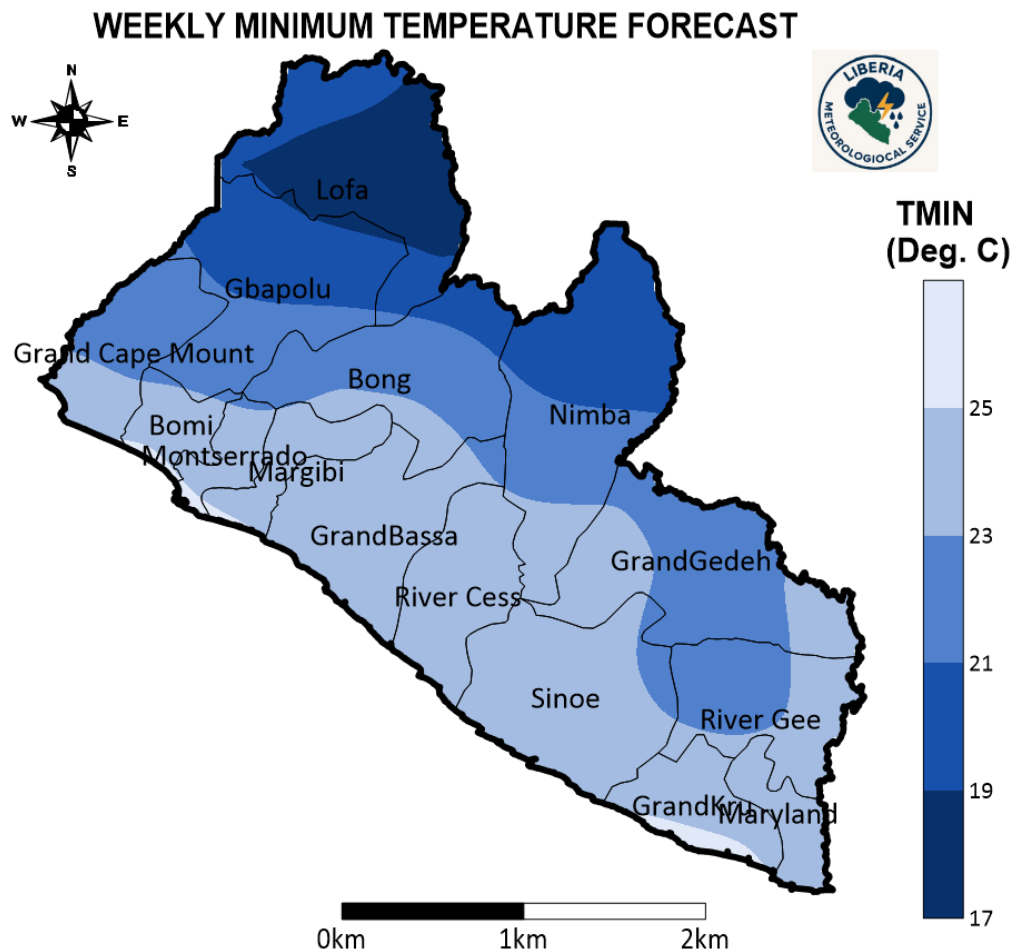
Maximum Temperature range of 35 – 40°C is not anticipated anywhere in Liberia. Temperature range of 30 – 35°C is likely in most parts of the country except for the southern parts of Bomi, Grand Kur, Maryland, Sinoe, River Cess, Grand Bassa, Grand Cape Mount, River Gee, Margibi, and Montserrado counties where 25 – 30°C is likely. See Figure 2.



**FIGURE 2: SPATIAL DISTRIBUTION OF MAXIMUM TEMPERATURE FORECAST.**

## 2.2 Minimum Temperature

Minimum temperature range of 25 - 30°C is expected in coastal parts Bomi, Margibi, and Montserrado. A range of 20 - 25°C is anticipated in most parts of the country with the exception of Lofa and northern Gbapolu counties where minimum temperature range of 15 -20°C is expected. See Figure 3.



**FIGURE 3: SPATIAL DISTRIBUTION OF MINIMUM TEMPERATURE FORECAST.**