



Ministry of Transport



MINISTRY OF TRANSPORT

**LIBERIA METEOROLOGICAL
SERVICE**



WEEKLY WEATHER FORECAST BULLETIN NO: 202601002
ISSUED ON: 19TH JANUARY, 2026.
VALID: FROM 19TH JANUARY, 2026 TO 25TH JANUARY, 2026.

REMARKS

Heavy rainfall (100 mm and above) is anticipated over parts of Bomi, Grand Bassa, Grand Cape Mount, Grand Gedeh, Grand Kru, Margibi, Maryland, Montserrado, Nimba, River Cess, River Gee, and Sinoe counties. Moderate to Heavy rainfall (75 – 100 mm) is expected over parts of Bomi, Gbapolu, Grand Bassa, Grand Cape Mount, Grand Gedeh, Margibi, Montserrado, Nimba, and River Cess counties. Moderate rainfall (50 – 75 mm) is likely over parts of Bomi, Bong, Gbapolu, Grand Bassa, Grand Cape Mount, Grand Gedeh, Margibi, Montserrado, and Nimba counties. Low to Moderate rainfall (25 – 50 mm) is likely over parts of Bong, Gbapolu, Grand Bassa, Grand Cape Mount, Grand Gedeh, Margibi, Montserrado, Nimba, River Cess, River Gee, and Sinoe counties. Low to no rainfall (0 – 20 mm) is likely over parts of Bong, Gbapolu, Grand Bassa, Grand Cape Mount, Grand Gedeh, Lofa, Margibi, Montserrado, and Nimba.

Advisory: There are prospects of flash floods on roads, bridges & low-lying areas, which can disrupt vehicular traffic. The public is advised to take necessary safety precautions; do not walk through fast-flowing runoff waters.

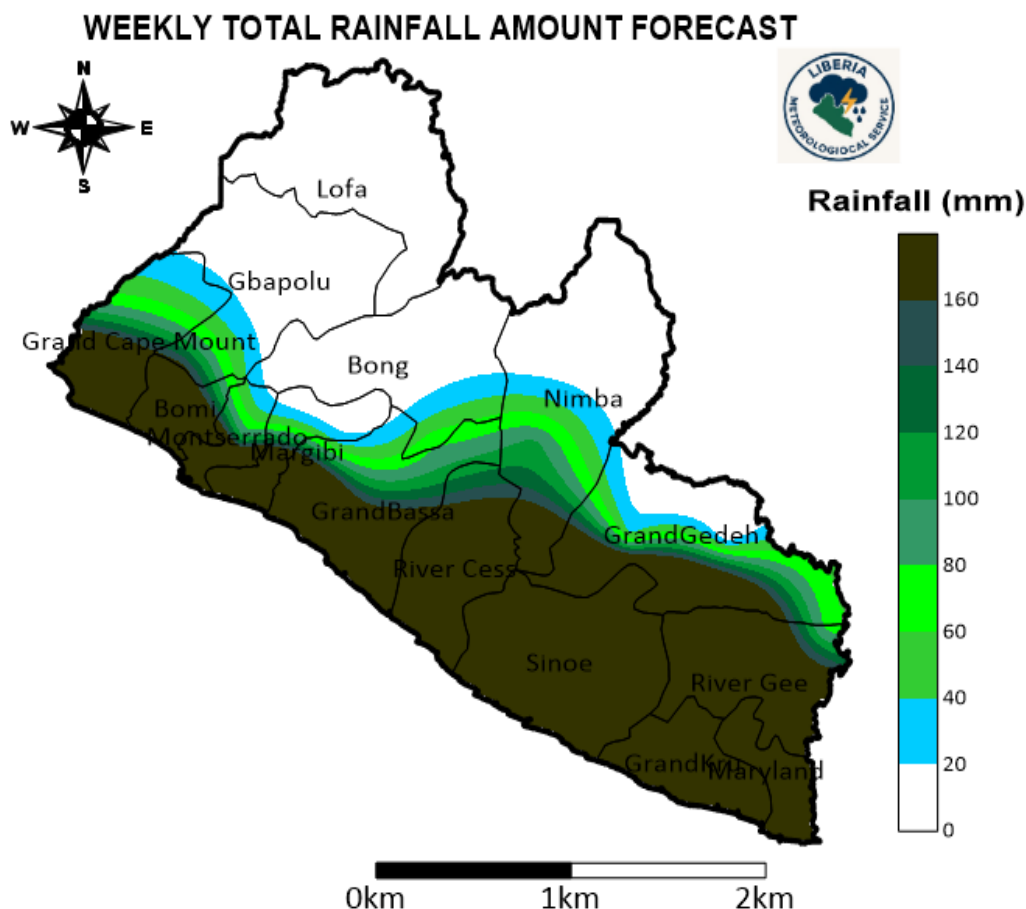


FIGURE 1: SPATIAL DISTRIBUTION OF ANTICIPATED RAINFALL.

2.1 Maximum Temperature

A Maximum Temperature range of 35 – 40 °C is not anticipated anywhere in Liberia. A maximum temperature range of 30–35 °C is likely in most parts of the counties, except in the southern areas of Bomi, Grand Bassa, Grand Cape Mount, Margibi, Montserrado, and River Cess; the western part of River Gee; and most parts of Grand Kru, Maryland and Sinoe counties, where a temperature range of 25–30 °C is likely. See Figure 2.

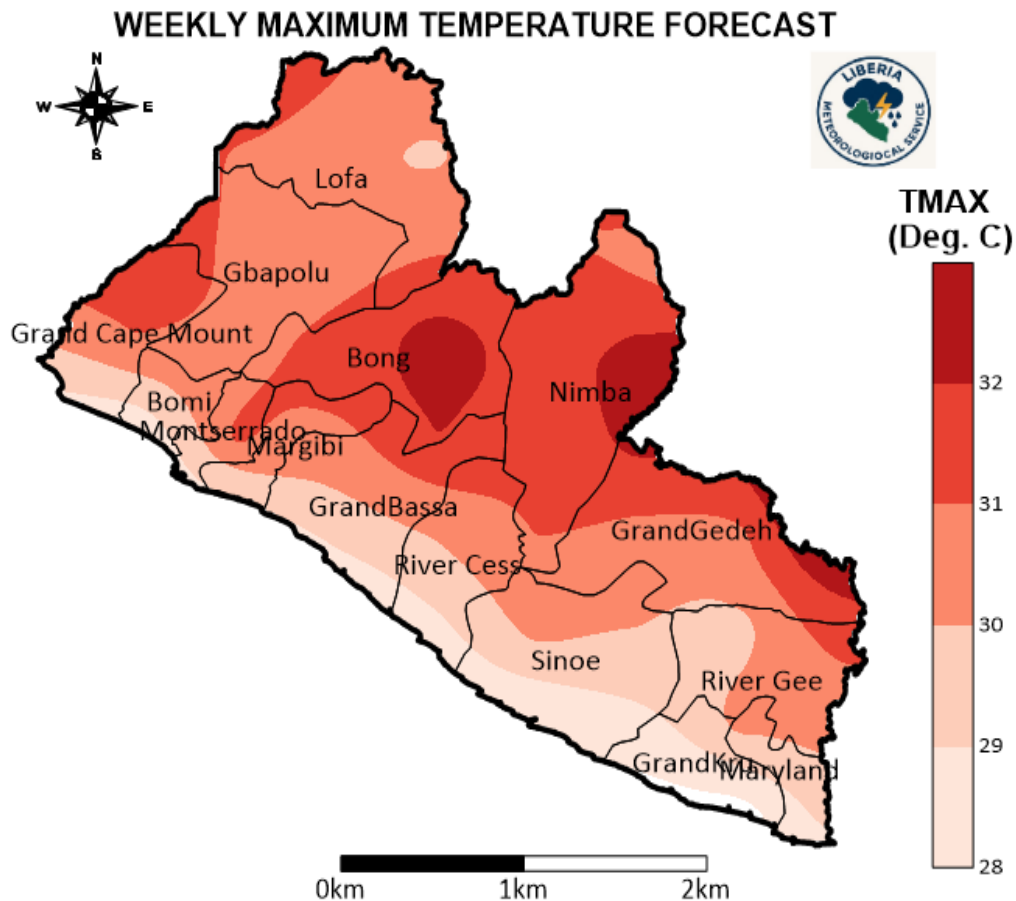


FIGURE 2: SPATIAL DISTRIBUTION OF MAXIMUM TEMPERATURE FORECAST.

For more detail: www.nimet.gov.ng; cfo@nimet.gov.ng

2.2 Minimum Temperature

A minimum temperature range of 25 - 30 °C is expected in coastal parts of Bomi, Grand Bassa, Grand Cape Mount, Margibi, and Montserrado. A range of 20 - 25 °C is anticipated in most parts of the country, except in most parts of Lofa, northern Gbapolu, and northern Nimba counties, where a minimum temperature range of 15 -20 °C is expected. See Figure 3.

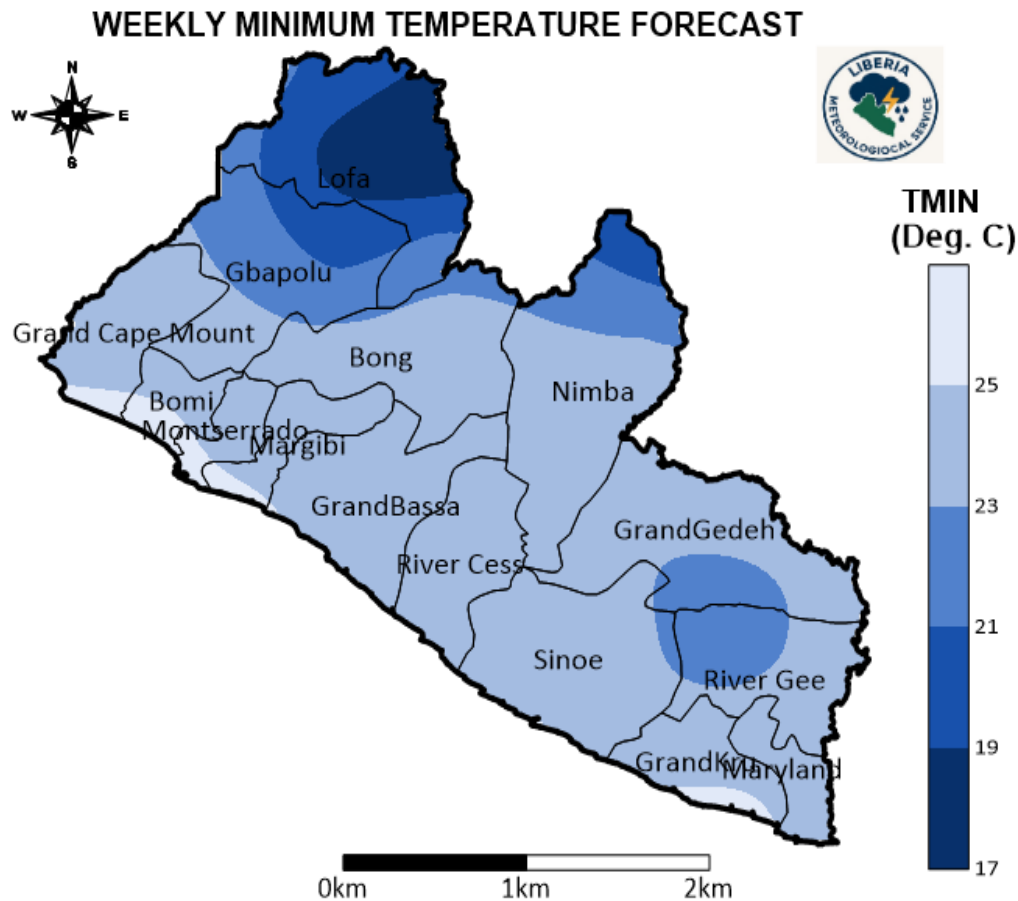


FIGURE 3: SPATIAL DISTRIBUTION OF MINIMUM TEMPERATURE FORECAST.

For more detail: www.nimet.gov.ng; cfo@nimet.gov.ng