

WEEKLY WEATHER FORECAST BULLETIN NO: 202601002
ISSUED ON: 27TH JANUARY, 2026.
VALID: FROM 27TH JANUARY, 2026 TO 2ND FEBRUARY, 2026.

REMARKS

Light to Moderate rainfall (1 mm – 25 mm) is anticipated in the southern parts of River Cess, Sinoe, Grand Kru, Mary land and River Gee counties. The rest of the country is expected to remain dry. See Figure 1.

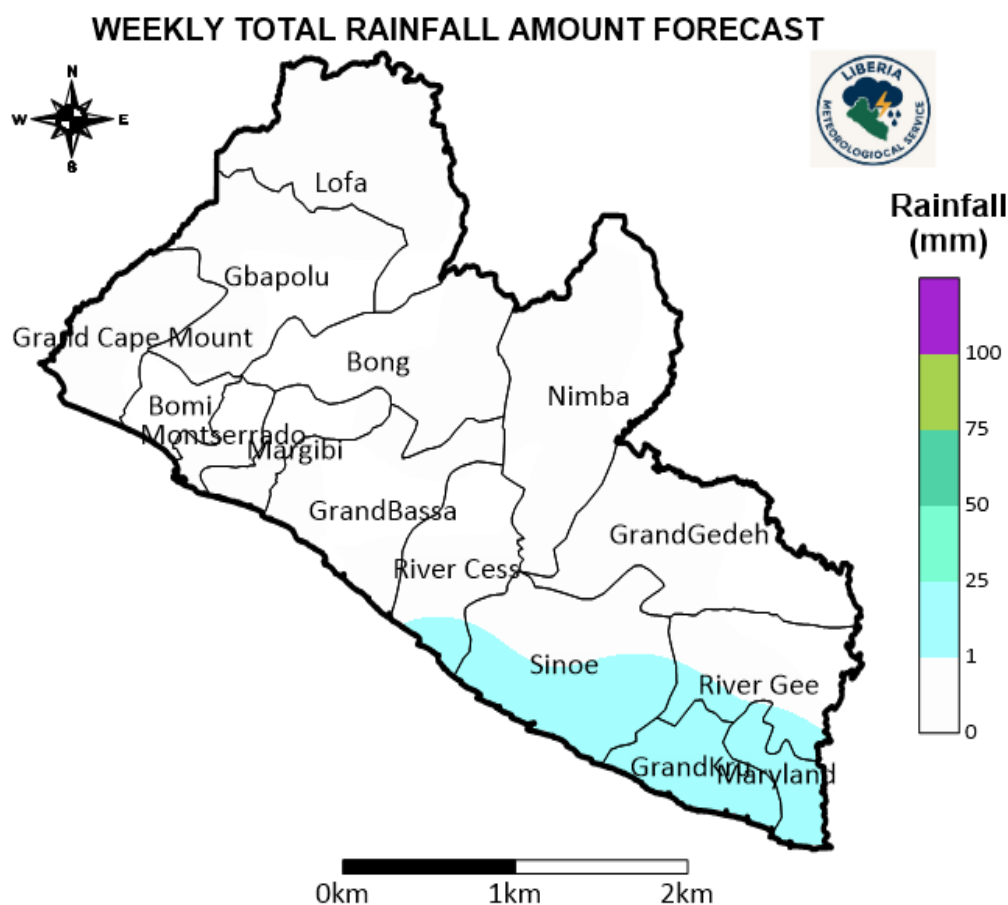


FIGURE 1: SPATIAL DISTRIBUTION OF ANTICIPATED RAINFALL.

2.1 Maximum Temperature

A Maximum Temperature range of 35 – 40 °C is not anticipated anywhere in Liberia. A maximum temperature range of 30–35 °C is likely in most parts of Liberia. Additionally, a range of 25–30 °C is likely to occurred along the coast covering the south of Grand Cape Mount, Bomi, Montserrado Margibi, Grand Bassa and Grand Kru Counties. See Figure 2.

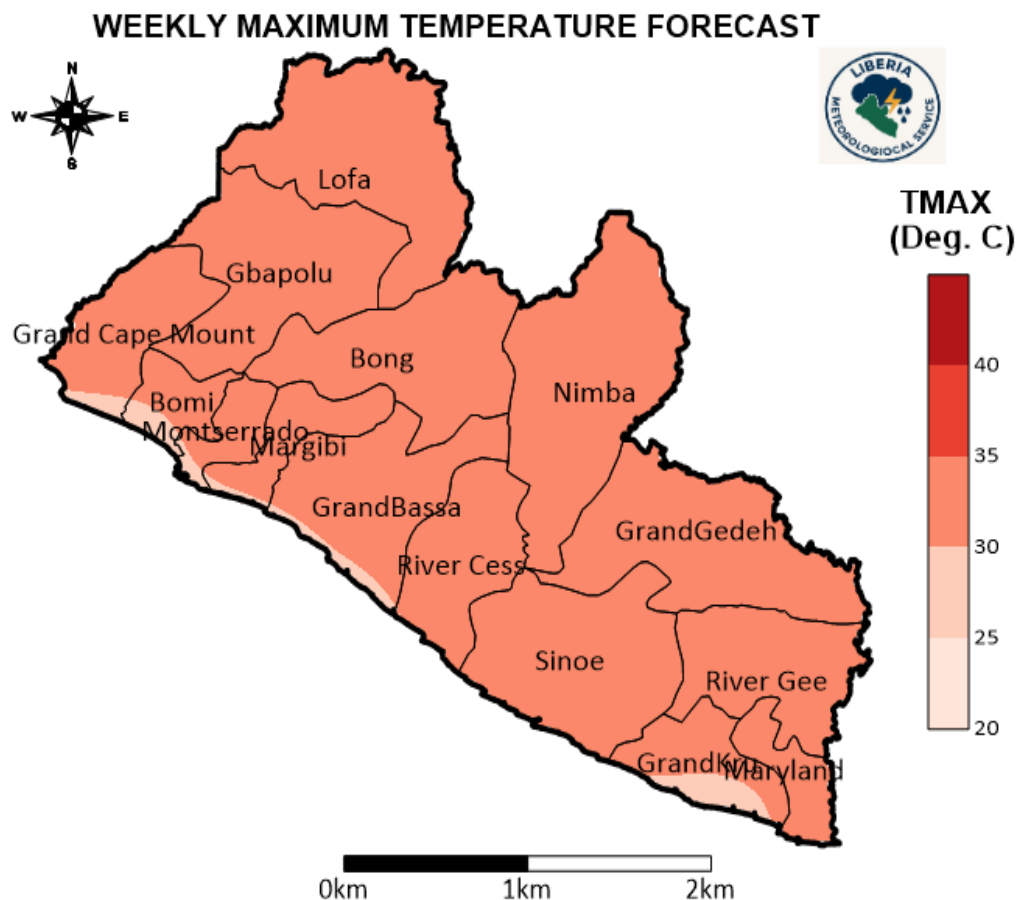


FIGURE 2: SPATIAL DISTRIBUTION OF MAXIMUM TEMPERATURE FORECAST.

2.2 Minimum Temperature

A minimum temperature range of 25 - 30 °C is expected in the coastal area of Sinoe, Grand Kru and Maryland counties. A range of 20 - 25 °C is anticipated in most parts of the country, excepted in most parts' country covering Grand Cape Mount, Bomi, Montserrado, Margibi, Grand Bassa, and River Cess. Additionally, South of Gbarpolu, Bong, Nimba and as well as Eastern Parts of Grand Gedeh Counties. where a minimum temperature range of 15 -20 °C is expected in Lofa, Gbarpolu, Bong, Nimba, and Grand Gedeh Counties. See Figure 3.

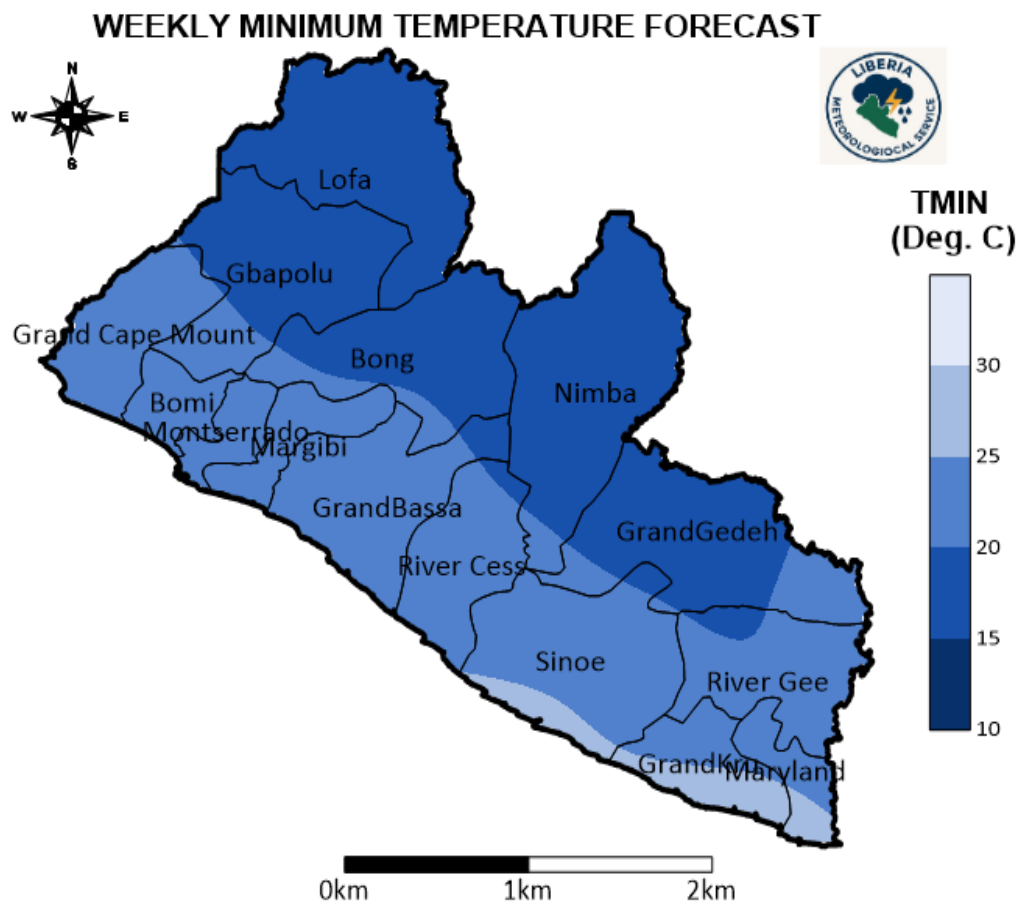


FIGURE 3: SPATIAL DISTRIBUTION OF MINIMUM TEMPERATURE FORECAST.